

For Research Use Only

ERC1 Polyclonal antibody

Catalog Number: 22211-1-AP

Featured Product

4 Publications



Basic Information

Catalog Number:

22211-1-AP

Size:

150ul, Concentration: 600 µg/ml by Nanodrop;

Source:

Rabbit

Isotype:

IgG

Immunogen Catalog Number:

AG17536

GenBank Accession Number:

BC132782

GeneID (NCBI):

23085

UNIPROT ID:

Q8IUD2

Full Name:

ELKS/RAB6-interacting/CAST family member 1

Calculated MW:

1116 aa, 128 kDa

Observed MW:

124-135 kDa

Purification Method:

Antigen affinity purification

Recommended Dilutions:

WB 1:500-1:2000

IF 1:20-1:200

Applications

Tested Applications:

IF, WB, ELISA

Cited Applications:

CoIP, IF, WB

Species Specificity:

human

Cited Species:

human, rat

Positive Controls:

WB: HeLa cells, COLO 320 cells, human testis tissue, Jurkat cells

IF: MCF-7 cells,

Background Information

ERC is an acronym based on previous separate namings of members of this protein family, ELKS, Rab6IP2 and CAST (PMID: 12391317). They are known to bind RIMs, the active zone proteins that regulate neurotransmitter release. ERC1 (ELKS) is an essential regulatory subunit of the IKK complex and likely functions by recruiting IκBα to the complex (PMID: 15218148). Multiple isoforms of ERC1 mRNA are generated by alternative splicing (PMID: 12203787). There are two known splice variants of ERC1 protein that differ at their C termini, ERC1a and ERC1b. ERC1a is ubiquitously expressed, whereas ERC1b is brain-specific (PMID: 12391317; 12923177).

Notable Publications

Author	Pubmed ID	Journal	Application
Qingyang Liu	29044157	Sci Rep	WB
Lou Fourriere	31142554	J Cell Biol	IF
Ivar Noordstra	35006275	J Cell Sci	WB, CoIP

Storage

Storage:

Store at -20°C. Stable for one year after shipment.

Storage Buffer:

PBS with 0.02% sodium azide and 50% glycerol pH 7.3.

Aliquoting is unnecessary for -20°C storage

*** 20ul sizes contain 0.1% BSA

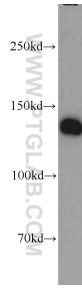
For technical support and original validation data for this product please contact:

T: 1 (888) 4PTGLAB (1-888-478-4522) (toll free in USA), or 1(312) 455-8498 (outside USA)

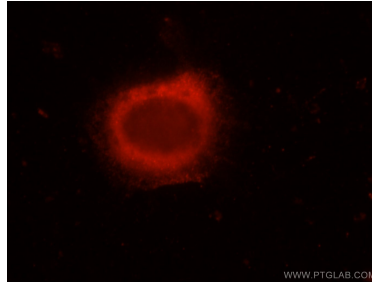
E: proteintech@ptglab.com
W: ptglab.com

This product is exclusively available under Proteintech Group brand and is not available to purchase from any other manufacturer.

Selected Validation Data



HeLa cells were subjected to SDS PAGE followed by western blot with 22211-1-AP (ERC1 antibody) at dilution of 1:1000 incubated at room temperature for 1.5 hours.



Immunofluorescent analysis of MCF-7 cells, using ERC1 antibody 22211-1-AP at 1:50 dilution and Rhodamine-labeled goat anti-rabbit IgG (red).