

For Research Use Only

SOSTDC1 Polyclonal antibody

Catalog Number: 22213-1-AP



Basic Information

Catalog Number: 22213-1-AP	GenBank Accession Number: BC008484	Purification Method: Antigen affinity purification
Size: 150ul , Concentration: 550 ug/ml by Nanodrop;	GeneID (NCBI): 25928	Recommended Dilutions: WB 1:500-1:2000 IF/ICC 1:50-1:500
Source: Rabbit	UNIPROT ID: Q6X4U4	
Isotype: IgG	Full Name: sclerostin domain containing 1	
Immunogen Catalog Number: AG17538	Calculated MW: 206 aa, 23 kDa	
	Observed MW: 23-26 kDa	

Applications

Tested Applications: WB, IF/ICC, ELISA	Positive Controls:
Species Specificity: human	WB : human milk, IF/ICC : Saos-2 cells,

Background Information

SOSTDC1 (Sclerostin domain-containing protein 1), also known as Ectodin (Ectodermal BMP inhibitor), is a member of the sclerostin family. It is an N-glycosylated, secreted protein with a C-terminal cystine knot-like domain and is highly abundant in milk and kidney. This protein functions as a bone morphogenetic protein (BMP) antagonist. Specifically, it directly associates with BMPs, prohibiting them from binding their receptors, thereby regulating BMP signaling during cellular proliferation, differentiation, and programmed cell death.

Storage

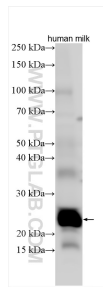
Storage:
Store at -20°C. Stable for one year after shipment.
Storage Buffer:
PBS with 0.02% sodium azide and 50% glycerol pH 7.3.
Aliquoting is unnecessary for -20°C storage

*** 20ul sizes contain 0.1% BSA

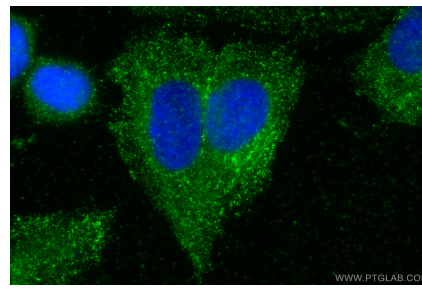
For technical support and original validation data for this product please contact:
T: 1 (888) 4PTGLAB (1-888-478-4522) (toll free in USA), or 1(312) 455-8498 (outside USA)
E: proteintech@ptglab.com
W: ptglab.com

This product is exclusively available under Proteintech Group brand and is not available to purchase from any other manufacturer.

Selected Validation Data



Various lysates were subjected to SDS PAGE followed by western blot with 22213-1-AP (SOSTDC1 antibody) at dilution of 1:1000 incubated at room temperature for 1.5 hours.



Immunofluorescent analysis of (-20°C Methanol) fixed Saos-2 cells using SOSTDC1 antibody (22213-1-AP) at dilution of 1:200 and CoraLite® 488-Conjugated Goat Anti-Rabbit IgG(H+L).