

For Research Use Only

# ADAM19 Polyclonal antibody, PBS Only

Catalog Number: 22216-1-PBS



## Basic Information

**Catalog Number:**

22216-1-PBS

**Size:**

100ug, Concentration: 1 mg/ml by Nanodrop;

**Source:**

Rabbit

**Isotype:**

IgG

**Immunogen Catalog Number:**

AG17544

**GenBank Accession Number:**

BC024214

**GeneID (NCBI):**

8728

**UNIPROT ID:**

Q9H013

**Full Name:**

ADAM metalloproteinase domain 19 (meltrin beta)

**Calculated MW:**

955 aa, 105 kDa

**Observed MW:**

105 kDa

**Purification Method:**

Antigen affinity purification

## Applications

**Tested Applications:**

WB, Indirect ELISA

**Species Specificity:**

human, mouse, rat

## Background Information

Meltrinβ(ADAM19) is a metalloprotease-disintegrin expressed in the peripheral nervous system and other organs during embryogenesis. Its specific patterns of expression during embryogenesis suggest that it is involved in the development of the peripheral nervous system, skeletal muscle, bone and heart tissue(PMID:12482604). It participates in the proteolytic processing of beta-type neuregulin isoforms which are involved in neurogenesis and synaptogenesis, suggesting a regulatory role in glial cell.

## Storage

**Storage:**

Store at -80°C.

**Storage Buffer:**

PBS only, pH7.3

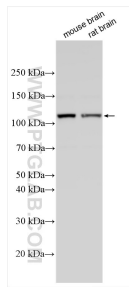
For technical support and original validation data for this product please contact:

T: 1 (888) 4PTGLAB (1-888-478-4522) (toll free in USA), or 1(312) 455-8498 (outside USA)

E: [proteintech@ptglab.com](mailto:proteintech@ptglab.com)  
W: [ptglab.com](http://ptglab.com)

**This product is exclusively available under Proteintech Group brand and is not available to purchase from any other manufacturer.**

## Selected Validation Data



Various lysates were subjected to SDS PAGE followed by western blot with 22216-1-AP (ADAM19 antibody) at dilution of 1:500 incubated at room temperature for 1.5 hours. This data was developed using the same antibody clone with 22216-1-PBS in a different storage buffer formulation.