

For Research Use Only

# CSE1L Polyclonal antibody

Catalog Number: 22219-1-AP

Featured Product

9 Publications



## Basic Information

<b>Catalog Number:</b> 22219-1-AP	<b>GenBank Accession Number:</b> BC109313	<b>Purification Method:</b> Antigen affinity purification
<b>Size:</b> 150ul, Concentration: 350 µg/ml by Nanodrop and 187 µg/ml by Bradford method using BSA as the standard;	<b>GeneID (NCBI):</b> 1434	<b>Recommended Dilutions:</b> WB 1:1000-1:4000 IP 0.5-4.0 ug for IP and 1:1000-1:4000 for WB
<b>Source:</b> Rabbit	<b>Full Name:</b> CSE1 chromosome segregation 1-Like (yeast)	<b>IHC:</b> 1:50-1:500
<b>Isotype:</b> IgG	<b>Calculated MW:</b> 971 aa, 110 kDa	
<b>Immunogen Catalog Number:</b> AG17556	<b>Observed MW:</b> 100-110 kDa	

## Applications

### Tested Applications:

IHC, IP, WB, ELISA

### Cited Applications:

IF, IHC, WB

### Species Specificity:

human, mouse

### Cited Species:

human, mouse

**Note-IHC: suggested antigen retrieval with TE buffer pH 9.0; (\*) Alternatively, antigen retrieval may be performed with citrate buffer pH 6.0**

### Positive Controls:

**WB:** HEK-293 cells, HeLa cells, Jurkat cells, mouse testis tissue, RAW264.7, MCF-7 cells, Ramos cells, NIH/3T3 cells

**IP:** HEK-293 cells,

**IHC:** human placenta tissue, mouse testis tissue

## Background Information

CSE1L (Chromosome Segregation 1-Like) is located on 20q13.13, and encodes a 971-amino-acid protein. It associates with microtubules and mitotic spindles, and is also considered to have a role in tumor progression. The CSE1L protein includes a nuclear localization signal allowing for transport into the nucleus via the importin- $\alpha$ / $\beta$  heterodimer. In addition, CSE1L plays roles in cell proliferation and apoptosis.

## Notable Publications

Author	Pubmed ID	Journal	Application
Chiara Bellio	35626166	Cancers (Basel)	WB
Joseph Hiatt	33979618	Cell Rep	WB
Xiao Zhang	33854580	J Cancer	WB

## Storage

### Storage:

Store at -20°C. Stable for one year after shipment.

### Storage Buffer:

PBS with 0.02% sodium azide and 50% glycerol pH 7.3.

Aliquoting is unnecessary for -20°C storage

\*\*\* 20ul sizes contain 0.1% BSA

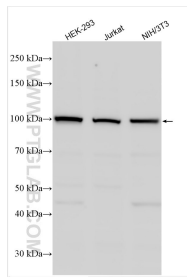
For technical support and original validation data for this product please contact:

T: 1 (888) 4PTGLAB (1-888-478-4522) (toll free in USA), or 1(312) 455-8498 (outside USA)

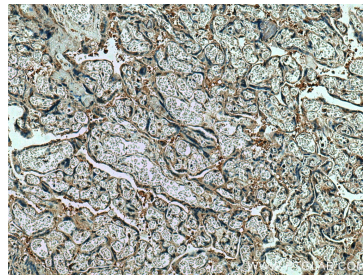
E: [proteintech@ptglab.com](mailto:proteintech@ptglab.com)  
W: [ptglab.com](http://ptglab.com)

This product is exclusively available under Proteintech Group brand and is not available to purchase from any other manufacturer.

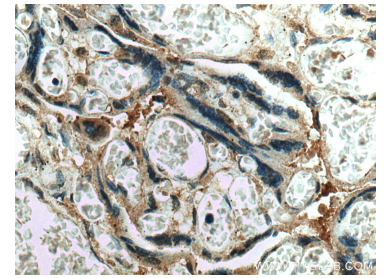
## Selected Validation Data



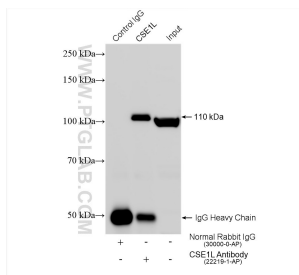
Various lysates were subjected to SDS PAGE followed by western blot with 22219-1-AP (CSE1L antibody) at dilution of 1:2000 incubated at room temperature for 1.5 hours.



Immunohistochemical analysis of paraffin-embedded human placenta tissue slide using 22219-1-AP (CSE1L antibody) at dilution of 1:200 (under 10x lens). Heat mediated antigen retrieval with Tris-EDTA buffer (pH 9.0).



Immunohistochemical analysis of paraffin-embedded human placenta tissue slide using 22219-1-AP (CSE1L antibody) at dilution of 1:200 (under 40x lens). Heat mediated antigen retrieval with Tris-EDTA buffer (pH 9.0).



IP result of anti-CSE1L(IP:22219-1-AP, 4ug; Detection:22219-1-AP 1:2000) with HEK-293 cells lysate 1400 ug.