

ALDH1B1 Polyclonal antibody

Catalog Number: 22220-1-AP

2 Publications

Basic Information

Catalog Number: 22220-1-AP	GenBank Accession Number: BC001619	Purification Method: Antigen affinity purification
Size: 150ul, Concentration: 1000 µg/ml by Nanodrop and 580 µg/ml by Bradford method using BSA as the standard;	GeneID (NCBI): 219	Recommended Dilutions: WB 1:500-1:2000 IHC 1:20-1:200 IF 1:20-1:200
Source: Rabbit	Full Name: aldehyde dehydrogenase 1 family, member B1	
Isotype: IgG	Calculated MW: 517 aa, 57 kDa	
Immunogen Catalog Number: AG17557	Observed MW: 55-58 kDa	

Applications

Tested Applications: IF, IHC, WB, ELISA	Positive Controls:
Cited Applications: IHC, WB	WB: HeLa cells, HepG2 cells, mouse brain tissue, mouse testis tissue, rat brain tissue
Species Specificity: human, mouse, rat	IHC: human testis tissue, human liver tissue
Cited Species: human, rat	IF: MCF-7 cells,
Note-IHC: suggested antigen retrieval with TE buffer pH 9.0; (*) Alternatively, antigen retrieval may be performed with citrate buffer pH 6.0	

Background Information

Aldehyde dehydrogenases (ALDHs) belong to a superfamily of NAD(P)+-dependent enzymes, which catalyze the oxidation of endogenous and exogenous aldehydes to their corresponding acids. ALDH1B1 is a mitochondrial ALDH that it is dramatically upregulated in human colonic adenocarcinoma, making it a potential biomarker for human colon cancer (PMID:21216231). ALDH1B1 is a homotetramer expressed in various adult and fetal human tissues including liver, testis, kidney, skeletal muscle, heart, placenta, brain and lung (PMID:18611112). This antibody is specific to ALDH1B1.

Notable Publications

Author	Pubmed ID	Journal	Application
Hao-Long Zeng	29254222	Oncotarget	WB
Tao Zhu	35281423	Transl Cancer Res	IHC

Storage

Storage:
Store at -20°C. Stable for one year after shipment.

Storage Buffer:
PBS with 0.02% sodium azide and 50% glycerol pH 7.3.

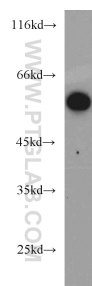
Aliquoting is unnecessary for -20°C storage

*** 20ul sizes contain 0.1% BSA

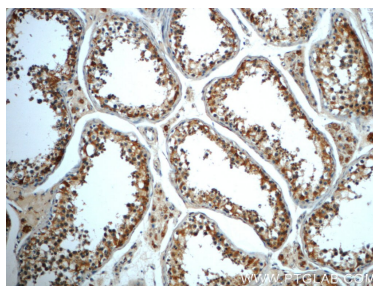
For technical support and original validation data for this product please contact:
 T: 1 (888) 4PTGLAB (1-888-478-4522) (toll free in USA), or 1(312) 455-8498 (outside USA)
 E: proteintech@ptglab.com
 W: ptglab.com

This product is exclusively available under Proteintech Group brand and is not available to purchase from any other manufacturer.

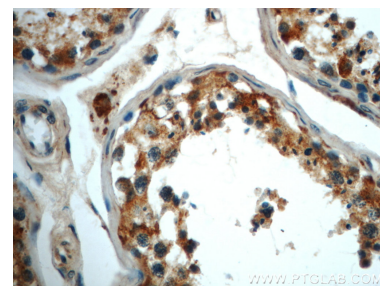
Selected Validation Data



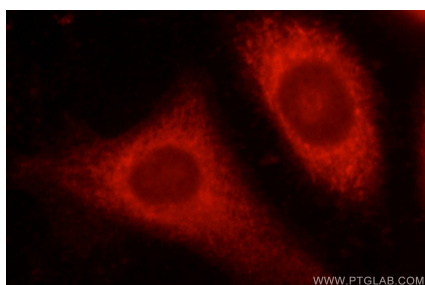
HeLa cells were subjected to SDS PAGE followed by western blot with 22220-1-AP (ALDH1B1 antibody) at dilution of 1:1000 incubated at room temperature for 1.5 hours.



Immunohistochemical analysis of paraffin-embedded human testis slide using 22220-1-AP (ALDH1B1 Antibody) at dilution of 1:50.



Immunohistochemical analysis of paraffin-embedded human testis slide using 22220-1-AP (ALDH1B1 Antibody) at dilution of 1:50.



Immunofluorescent analysis of MCF-7 cells, using ALDH1B1 antibody 22220-1-AP at 1:50 dilution and Rhodamine-labeled goat anti-rabbit IgG (red).