

Cytokeratin 17 Polyclonal antibody

Catalog Number: 22230-1-AP

Basic Information

| | | |
|--|--|--|
| Catalog Number: 22230-1-AP | GenBank Accession Number: BC000159 | Purification Method: Antigen affinity purification |
| Size: 150ul , Concentration: 550 µg/ml by Nanodrop and 353 µg/ml by Bradford method using BSA as the standard; | GeneID (NCBI): 3872 | Recommended Dilutions: WB 1:1000-1:4000 IHC 1:20-1:200 IF 1:20-1:200 |
| Source: Rabbit | Full Name: keratin 17 | |
| Isotype: IgG | Calculated MW: 432 aa, 48 kDa | |
| Immunogen Catalog Number: AG17575 | Observed MW: 48 kDa | |

Applications

| | |
|--|--|
| Tested Applications: IF, IHC, WB, ELISA | Positive Controls: |
| Species Specificity: human, mouse | WB : HeLa cells, MCF-7 cells |
| Note-IHC: suggested antigen retrieval with TE buffer pH 9.0; (*) Alternatively, antigen retrieval may be performed with citrate buffer pH 6.0 | IHC : human cervical cancer tissue, |
| | IF : HeLa cells, |

Background Information

Keratins are a large family of proteins that form the intermediate filament cytoskeleton of epithelial cells, which are classified into two major sequence types. Type I keratins are a group of acidic intermediate filament proteins, including K9-K23, and the hair keratins Ha1-Ha8. Type II keratins are the basic or neutral counterparts to the acidic type I keratins, including K1-K8, and the hair keratins, Hb1-Hb6. Keratin 17 is a type I cytokeratin. It is found in nail beds, hair follicles, sebaceous glands, and other epidermal appendages. It is used as a marker for trauma.

Storage

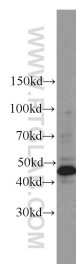
Storage:
Store at -20°C. Stable for one year after shipment.
Storage Buffer:
PBS with 0.02% sodium azide and 50% glycerol pH 7.3.
Aliquoting is unnecessary for -20°C storage

*** 20ul sizes contain 0.1% BSA

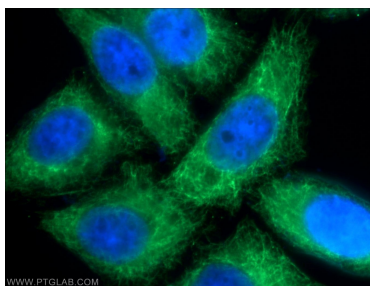
For technical support and original validation data for this product please contact:
T: 1 (888) 4PTGLAB (1-888-478-4522) (toll free in USA), or 1(312) 455-8498 (outside USA)
E: proteintech@ptglab.com
W: ptglab.com

This product is exclusively available under Proteintech Group brand and is not available to purchase from any other manufacturer.

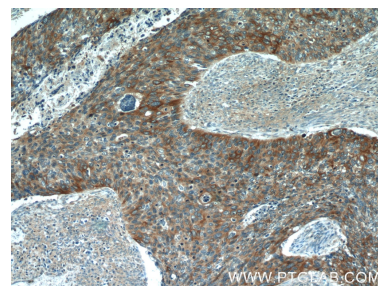
Selected Validation Data



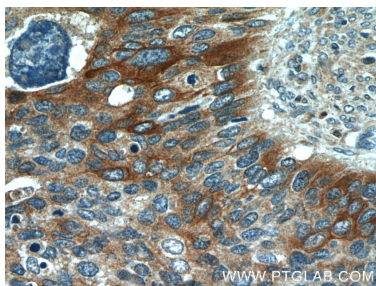
HeLa cells were subjected to SDS PAGE followed by western blot with 22230-1-AP (Cytokeratin 17 antibody) at dilution of 1:2000 incubated at room temperature for 1.5 hours.



Immunofluorescent analysis of HeLa cells using 22230-1-AP (Cytokeratin 17 antibody) at dilution of 1:50 and Alexa Fluor 488-conjugated AffiniPure Goat Anti-Rabbit IgG(H+L).



Immunohistochemical analysis of paraffin-embedded human cervical cancer tissue slide using 22230-1-AP (Cytokeratin 17 antibody at dilution of 1:50 (under 10x lens).



Immunohistochemical analysis of paraffin-embedded human cervical cancer tissue slide using 22230-1-AP (Cytokeratin 17 antibody at dilution of 1:50 (under 40x lens).