

For Research Use Only

# KIRREL Polyclonal antibody

Catalog Number: 22232-1-AP



## Basic Information

<b>Catalog Number:</b> 22232-1-AP	<b>GenBank Accession Number:</b> BC109192	<b>Purification Method:</b> Antigen affinity purification
<b>Size:</b> 150ul , Concentration: 600 µg/ml by Nanodrop and 393 µg/ml by Bradford method using BSA as the standard;	<b>GeneID (NCBI):</b> 55243	<b>Recommended Dilutions:</b> WB 1:500-1:3000
<b>Source:</b> Rabbit	<b>Full Name:</b> kin of IRRE like (Drosophila)	
<b>Isotype:</b> IgG	<b>Calculated MW:</b> 757 aa, 84 kDa	
<b>Immunogen Catalog Number:</b> AG17578	<b>Observed MW:</b> 72 kDa	

## Applications

<b>Tested Applications:</b> WB, ELISA	<b>Positive Controls:</b> WB : C2C12 cells, mouse brain tissue, mouse kidney tissue, mouse lung tissue, rat brain tissue
<b>Species Specificity:</b> human, mouse, rat	

## Background Information

Kin of IRRE protein (KIRREL), also known as NEPH1, is a member of a podocin-binding protein family. KIRREL is a component of the podocyte slit diaphragm, which serves as the structural framework of the glomerular filtration barrier. KIRREL has three isoforms with molecular weights of 85 kDa, 83 kDa, and 72 kDa.

## Storage

**Storage:**  
Store at -20°C. Stable for one year after shipment.  
**Storage Buffer:**  
PBS with 0.02% sodium azide and 50% glycerol pH 7.3.  
Aliquoting is unnecessary for -20°C storage

\*\*\* 20ul sizes contain 0.1% BSA

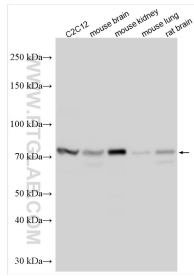
For technical support and original validation data for this product please contact:

T: 1 (888) 4PTGLAB (1-888-478-4522) (toll free in USA), or 1(312) 455-8498 (outside USA)

E: [proteintech@ptglab.com](mailto:proteintech@ptglab.com)  
W: [ptglab.com](http://ptglab.com)

This product is exclusively available under Proteintech Group brand and is not available to purchase from any other manufacturer.

## Selected Validation Data



Various lysates were subjected to SDS PAGE followed by western blot with 22232-1-AP (KIRREL antibody) at dilution of 1:1500 incubated at room temperature for 1.5 hours.