

For Research Use Only

# KIRREL Polyclonal antibody, PBS Only

Catalog Number: 22232-1-PBS



## Basic Information

**Catalog Number:**

22232-1-PBS

**Size:**

100ug, Concentration: 1 mg/ml by Nanodrop;

**Source:**

Rabbit

**Isotype:**

IgG

**Immunogen Catalog Number:**

AG17578

**GenBank Accession Number:**

BC109192

**GeneID (NCBI):**

55243

**UNIPROT ID:**

Q96J84

**Full Name:**

kin of IRRE like (Drosophila)

**Calculated MW:**

757 aa, 84 kDa

**Observed MW:**

72 kDa

**Purification Method:**

Antigen affinity purification

## Applications

**Tested Applications:**

WB, IF-P, Indirect ELISA

**Species Specificity:**

human, mouse, rat

## Background Information

Kin of IRRE protein (KIRREL), also known as NEPH1, is a member of a podocin-binding protein family. KIRREL is a component of the podocyte slit diaphragm, which serves as the structural framework of the glomerular filtration barrier. KIRREL has three isoforms with molecular weights of 85 kDa, 83 kDa, and 72 kDa.

## Storage

**Storage:**

Store at -80°C.

**Storage Buffer:**

PBS Only

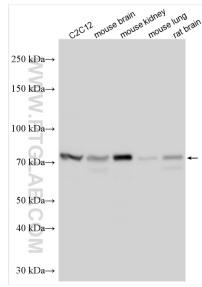
For technical support and original validation data for this product please contact:

T: 1 (888) 4PTGLAB (1-888-478-4522) (toll free in USA), or 1(312) 455-8498 (outside USA)

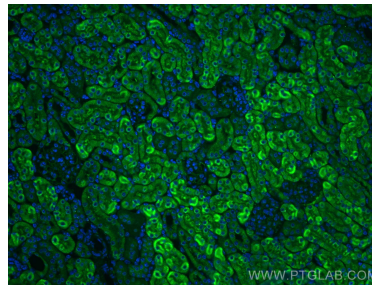
E: [proteintech@ptglab.com](mailto:proteintech@ptglab.com)  
W: [ptglab.com](http://ptglab.com)

**This product is exclusively available under Proteintech Group brand and is not available to purchase from any other manufacturer.**

## Selected Validation Data



Various lysates were subjected to SDS PAGE followed by western blot with 22232-1-AP (KIRREL antibody) at dilution of 1:1500 incubated at room temperature for 1.5 hours. This data was developed using the same antibody clone with 22232-1-PBS in a different storage buffer formulation.



Immunofluorescent analysis of (4% PFA) fixed paraffin-embedded mouse kidney tissue using KIRREL antibody (22232-1-AP) at dilution of 1:200 and CoraLite®488-Conjugated AffiniPure Goat Anti-Rabbit IgG(H+L) (SA00013-2). Heat mediated antigen retrieval with Tris-EDTA buffer (pH 9.0). This data was developed using the same antibody clone with 22232-1-PBS in a different storage buffer formulation.