

For Research Use Only

ADAM28 Polyclonal antibody, PBS Only

Catalog Number: 22234-1-PBS

Featured Product



Basic Information

Catalog Number:

22234-1-PBS

Size:

100ug, Concentration: 1 mg/ml by Nanodrop;

Source:

Rabbit

Isotype:

IgG

Immunogen Catalog Number:

AG17586

GenBank Accession Number:

BC136478

GeneID (NCBI):

10863

UNIPROT ID:

Q9UKQ2

Full Name:

ADAM metalloproteinase domain 28

Calculated MW:

775 aa, 87 kDa

Observed MW:

35 kDa

Purification Method:

Antigen affinity purification

Applications

Tested Applications:

WB, IP, Indirect ELISA

Species Specificity:

human, mouse

Background Information

ADAM28 belongs to a family of cell surface and secreted glycoproteins that possess both proteolytic and adhesive properties. ADAM28 is predominantly expressed by carcinoma cells in the breast carcinoma tissues as protein bands of 42 kDa and 55/57 kDa, which correspond to the active forms of ADAM28s and ADAM28m, respectively. In human non-small cell lung carcinomas and breast carcinomas, ADAM28 is overexpressed predominantly by carcinoma cells, and the expression correlates with carcinoma cell proliferation and lymph node metastasis (PMID:19601836).

Storage

Storage:

Store at -80°C.

Storage Buffer:

PBS Only

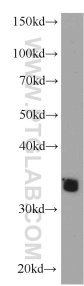
For technical support and original validation data for this product please contact:

T: 1 (888) 4PTGLAB (1-888-478-4522) (toll free in USA), or 1(312) 455-8498 (outside USA)

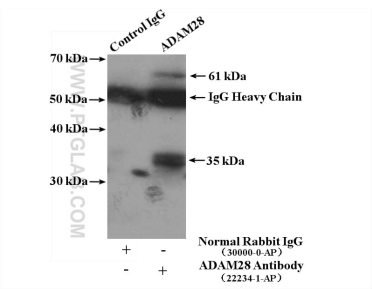
E: proteintech@ptglab.com
W: ptglab.com

This product is exclusively available under Proteintech Group brand and is not available to purchase from any other manufacturer.

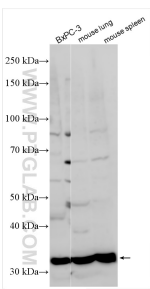
Selected Validation Data



mouse lung tissue were subjected to SDS PAGE followed by western blot with 22234-1-AP (ADAM28 antibody) at dilution of 1:800 incubated at room temperature for 1.5 hours. This data was developed using the same antibody clone with 22234-1-PBS in a different storage buffer formulation.



IP result of anti-ADAM28 (IP:22234-1-AP, 4ug; Detection:22234-1-AP 1:800) with mouse lung tissue lysate 3600ug. This data was developed using the same antibody clone with 22234-1-PBS in a different storage buffer formulation.



Various lysates were subjected to SDS PAGE followed by western blot with 22234-1-AP (ADAM28 antibody) at dilution of 1:1000 incubated at room temperature for 1.5 hours. This data was developed using the same antibody clone with 22234-1-PBS in a different storage buffer formulation.