

For Research Use Only

BRD2 Polyclonal antibody

Catalog Number: 22236-1-AP

Featured Product

9 Publications



Basic Information

Catalog Number:

22236-1-AP

Size:

150ul, Concentration: 1500 ug/ml by Nanodrop and 807 ug/ml by Bradford method using BSA as the standard;

Source:

Rabbit

Isotype:

IgG

Immunogen Catalog Number:

AG17589

GenBank Accession Number:

BC063840

GeneID (NCBI):

6046

UNIPROT ID:

P25440

Full Name:

bromodomain containing 2

Calculated MW:

836 aa, 92 kDa

Observed MW:

100-110 kDa

Purification Method:

Antigen affinity purification

Recommended Dilutions:

WB 1:500-1:1000

IP 0.5-4.0 ug for 1.0-3.0 mg of total protein lysate

IHC 1:50-1:500

Applications

Tested Applications:

WB, IHC, IP, ELISA

Cited Applications:

WB, IP, ChIP

Species Specificity:

human

Cited Species:

human, mouse

Note-IHC: suggested antigen retrieval with TE buffer pH 9.0; (*) Alternatively, antigen retrieval may be performed with citrate buffer pH 6.0

Positive Controls:

WB : HeLa cells,

IP : HeLa cells,

IHC : human stomach tissue,

Notable Publications

Author	Pubmed ID	Journal	Application
Xing Bian	33134168	Front Oncol	WB
Wenyu Wang	34290255	Nat Commun	WB
Xiangpeng Dai	28805820	Nat Med	WB

Storage

Storage:

Store at -20°C. Stable for one year after shipment.

Storage Buffer:

PBS with 0.02% sodium azide and 50% glycerol pH 7.3.

Aliquoting is unnecessary for -20°C storage

*** 20ul sizes contain 0.1% BSA

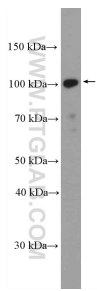
For technical support and original validation data for this product please contact:

T: 1 (888) 4PTGLAB (1-888-478-4522) (toll free in USA), or 1(312) 455-8498 (outside USA)

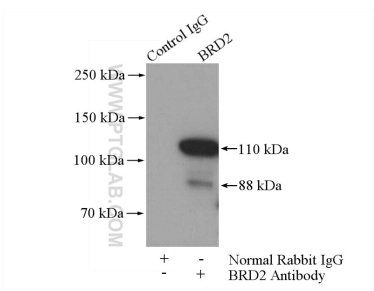
E: proteintech@ptglab.com
W: ptglab.com

This product is exclusively available under Proteintech Group brand and is not available to purchase from any other manufacturer.

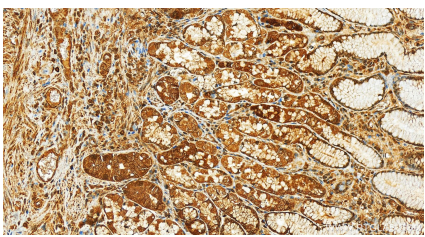
Selected Validation Data



HeLa cells were subjected to SDS PAGE followed by western blot with 22236-1-AP (BRD2 Antibody) at dilution of 1:600 incubated at room temperature for 1.5 hours.



IP result of anti-BRD2 (IP:22236-1-AP, 4ug; Detection:22236-1-AP 1:300) with HeLa cells lysate 1200ug.



Immunohistochemical analysis of paraffin-embedded human normal stomach slide using 22236-1-AP (BRD2 antibody) at dilution of 1:100 (under 20x lens). Heat mediated antigen retrieval with Tris-EDTA buffer (pH 9.0).