

For Research Use Only

TLR6 Polyclonal antibody

Catalog Number: 22240-1-AP

Featured Product

11 Publications



Basic Information

Catalog Number:

22240-1-AP

Size:

150ul, Concentration: 600 ug/ml by Nanodrop;

Source:

Rabbit

Isotype:

IgG

Immunogen Catalog Number:

AG17686

GenBank Accession Number:

BC111755

GeneID (NCBI):

10333

UNIPROT ID:

Q9Y2C9

Full Name:

toll-like receptor 6

Calculated MW:

480 aa, 56 kDa

Observed MW:

95-110 kDa

Purification Method:

Antigen affinity purification

Recommended Dilutions:

WB 1:500-1:2000

Applications

Tested Applications:

WB, ELISA

Cited Applications:

WB

Species Specificity:

human, mouse

Cited Species:

human, mouse, rat

Positive Controls:

WB: RAW 264.7 cells, human brain tissue, mouse thymus tissue, Jurkat cells, HT-1080 cells

Background Information

TLR6, also known as CD286, belongs to the Toll-like receptor (TLR) family which is important in the innate immune response to pathogens. TLRs are highly conserved from Drosophila to humans and share structural and functional similarities. TLR6 can form a heterodimer with TLR2. TLR6 and TLR2 both are recruited to the macrophage phagosome, where they recognize peptidoglycan, a Gram-positive pathogen component (PMID: 11095740). TLR6 interacts with CD36, following CD36 stimulation by oxLDL or amyloid-beta 42, and forms a heterodimer with TLR4. The trimeric complex is internalized and triggers an inflammatory response.

Notable Publications

Author	Pubmed ID	Journal	Application
Xianyang Wang	36174413	Eur J Med Chem	
Xiaoyu Xie	34649530	BMC Med	WB
Cong Li	31885603	Stem Cells Int	WB

Storage

Storage:

Store at -20°C. Stable for one year after shipment.

Storage Buffer:

PBS with 0.02% sodium azide and 50% glycerol pH 7.3.

Aliquoting is unnecessary for -20°C storage

*** 20ul sizes contain 0.1% BSA

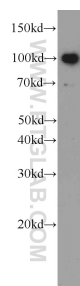
For technical support and original validation data for this product please contact:

T: 1 (888) 4PTGLAB (1-888-478-4522) (toll free in USA), or 1(312) 455-8498 (outside USA)

E: proteintech@ptglab.com
W: ptglab.com

This product is exclusively available under Proteintech Group brand and is not available to purchase from any other manufacturer.

Selected Validation Data



RAW 264.7 cells were subjected to SDS PAGE followed by western blot with 22240-1-AP (TLR6 antibody) at dilution of 1:1000 incubated at room temperature for 1.5 hours.