

For Research Use Only

# SPOCD1 Polyclonal antibody

Catalog Number: 22243-1-AP

2 Publications



## Basic Information

Catalog Number:

22243-1-AP

Size:

150ul, Concentration: 700 ug/ml by Nanodrop;

Source:

Rabbit

Isotype:

IgG

Immunogen Catalog Number:

AG17734

GenBank Accession Number:

BC114430

GeneID (NCBI):

90853

UNIPROT ID:

Q6ZMY3

Full Name:

SPOC domain containing 1

Calculated MW:

1203 aa, 129 kDa

Observed MW:

100 kDa

Purification Method:

Antigen Affinity purified

Recommended Dilutions:

WB 1:500-1:2000

## Applications

Tested Applications:

WB, ELISA

Cited Applications:

WB, IF

Species Specificity:

human

Cited Species:

human

Positive Controls:

WB : SH-SY5Y cells, HEK-293 cells, human testis tissue

## Background Information

The PIWI protein MIWI2 (PIWIL4; 610315) and its associated PIWI-interacting RNAs (piRNAs) direct DNA methylation of transposable elements in the male germline. SPOCD1 is an essential nuclear effector of MIWI2- and piRNA-directed DNA methylation (PubMed: 32674113).

## Notable Publications

Author	Pubmed ID	Journal	Application
Takashi Sakaguchi	29796168	Oncotarget	WB
Xiuxia Wang	39820341	Cell Death Discov	WB,IF

## Storage

Storage:

Store at -20°C. Stable for one year after shipment.

Storage Buffer:

PBS with 0.02% sodium azide and 50% glycerol, pH7.3

Aliquoting is unnecessary for -20°C storage

\*\*\* 20ul sizes contain 0.1% BSA

For technical support and original validation data for this product please contact:

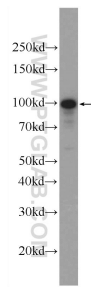
T: 1 (888) 4PTGLAB (1-888-478-4522) (toll free in USA), or 1(312) 455-8498 (outside USA)

E: [proteintech@ptglab.com](mailto:proteintech@ptglab.com)

W: [ptglab.com](http://ptglab.com)

This product is exclusively available under Proteintech Group brand and is not available to purchase from any other manufacturer.

## Selected Validation Data



SH-SY5Y cells were subjected to SDS PAGE followed by western blot with 22243-1-AP (SPOCD1 Antibody) at dilution of 1:1000 incubated at room temperature for 1.5 hours.