

For Research Use Only

CALCA/CGRP Polyclonal antibody

Catalog Number: 22244-1-AP



Basic Information

Catalog Number: 22244-1-AP	GenBank Accession Number: BC093753	Purification Method: Antigen affinity purification
Size: 150ul , Concentration: 2500 µg/ml by Nanodrop and 887 µg/ml by Bradford method using BSA as the standard;	GeneID (NCBI): 796	Recommended Dilutions: WB 1:500-1:1000
Source: Rabbit	Full Name: calcitonin-related polypeptide alpha	
Isotype: IgG	Calculated MW: 141 aa, 15 kDa	
Immunogen Catalog Number: AG17737	Observed MW: 14 kDa, 5 kDa	

Applications

Tested Applications: WB, ELISA	Positive Controls: WB : TT cells, Transfected HEK-293 cells
Species Specificity: human	

Background Information

Calcitonin gene-related peptide (CGRP) is a 37-amino acid neuropeptide, which is primarily localized to C and Aδ sensory fibers. These fibers display a wide innervation throughout the body, with extensive perivascular localization, and have a dual role in sensory (nociceptive) and efferent (effector) function. Discovered 30 years ago, it is produced as a consequence of alternative RNA processing of the calcitonin gene. CGRP has two major forms (α and β).

Storage

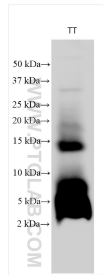
Storage:
Store at -20°C. Stable for one year after shipment.
Storage Buffer:
PBS with 0.02% sodium azide and 50% glycerol pH 7.3.
Aliquoting is unnecessary for -20°C storage

*** 20ul sizes contain 0.1% BSA

For technical support and original validation data for this product please contact:
T: 1 (888) 4PTGLAB (1-888-478-4522) (toll free in USA), or 1(312) 455-8498 (outside USA) E: proteintech@ptglab.com
W: ptglab.com

This product is exclusively available under Proteintech Group brand and is not available to purchase from any other manufacturer.

Selected Validation Data



TT cells were subjected to SDS PAGE followed by western blot with 22244-1-AP (CGRP antibody) at dilution of 1:600 incubated at room temperature for 1.5 hours.