

For Research Use Only

# RBM15B Polyclonal antibody

Catalog Number: 22249-1-AP

Featured Product

12 Publications



## Basic Information

### Catalog Number:

22249-1-AP

### Size:

150ul, Concentration: 900 ug/ml by Nanodrop and 267 ug/ml by Bradford method using BSA as the standard;

### Source:

Rabbit

### Isotype:

IgG

### Immunogen Catalog Number:

AG17744

### GenBank Accession Number:

BC001367

### GeneID (NCBI):

29890

### UNIPROT ID:

Q8NDT2

### Full Name:

RNA binding motif protein 15B

### Calculated MW:

890 aa, 97 kDa

### Observed MW:

100-120 kDa, 70 kDa

### Purification Method:

Antigen affinity purification

### Recommended Dilutions:

WB 1:500-1:3000

IP 0.5-4.0 ug for 1.0-3.0 mg of total protein lysate

## Applications

### Tested Applications:

WB, IP, ELISA

### Cited Applications:

WB, RIP, IHC, CoIP

### Species Specificity:

human, mouse, rat

### Cited Species:

human, mouse

### Positive Controls:

WB: HeLa cells, HEK-293 cells, mouse brain tissue

IP: HeLa cells,

## Background Information

RBM15B, one members of the SPEN (Split-end) family of proteins, have repressor function in several signaling pathways and may bind to RNA through interaction with spliceosome components. Present polyclonal anti-RBM15B antibody was produced by immunizing animals with C-terminus of RBM15B, which homolog with a short form of RBM15B(563aa, ~70kDa), thus this antibody can recognize full length of RBM15B(~100kDa) and splice-one(70kDa)

## Notable Publications

Author	Pubmed ID	Journal	Application
He Huang	32847866	eNeuro	WB
Elodie Villa	33756106	Mol Cell	WB
Wenqi Xu	33505026	Nature	WB

## Storage

### Storage:

Store at -20°C. Stable for one year after shipment.

### Storage Buffer:

PBS with 0.02% sodium azide and 50% glycerol pH 7.3.

Aliquoting is unnecessary for -20°C storage

\*\*\* 20ul sizes contain 0.1% BSA

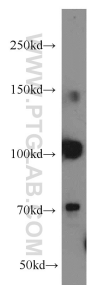
For technical support and original validation data for this product please contact:

T: 1 (888) 4PTGLAB (1-888-478-4522) (toll free in USA), or 1(312) 455-8498 (outside USA)

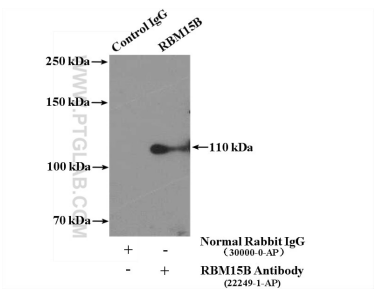
E: [proteintech@ptglab.com](mailto:proteintech@ptglab.com)  
W: [ptglab.com](http://ptglab.com)

This product is exclusively available under Proteintech Group brand and is not available to purchase from any other manufacturer.

Selected Validation Data



HeLa cells were subjected to SDS PAGE followed by western blot with 22249-1-AP (RBM15B antibody) at dilution of 1:2000 incubated at room temperature for 1.5 hours.



IP result of anti-RBM15B (IP:22249-1-AP, 4ug; Detection:22249-1-AP 1:500) with HeLa cells lysate 2500ug.