

For Research Use Only

FAM98B Polyclonal antibody

Catalog Number: 22251-1-AP

1 Publications



Basic Information

Catalog Number:

22251-1-AP

Size:

150ul, Concentration: 500 ug/ml by Nanodrop and 287 ug/ml by Bradford method using BSA as the standard;

Source:

Rabbit

Isotype:

IgG

Immunogen Catalog Number:

AG17747

GenBank Accession Number:

BC093898

GeneID (NCBI):

283742

UNIPROT ID:

Q52LJ0

Full Name:

family with sequence similarity 98, member B

Calculated MW:

330 aa, 37 kDa

Observed MW:

45-48 kDa

Purification Method:

Antigen affinity purification

Recommended Dilutions:

WB 1:1000-1:6000

IHC 1:20-1:200

IF/ICC 1:200-1:800

Applications

Tested Applications:

WB, IHC, IF/ICC, ELISA

Cited Applications:

WB

Species Specificity:

human, mouse, rat

Cited Species:

human

Note-IHC: suggested antigen retrieval with TE buffer pH 9.0; (*) Alternatively, antigen retrieval may be performed with citrate buffer pH 6.0

Positive Controls:

WB : HepG2 cells, Caco-2 cells, Raji cells, mouse brain tissue, rat brain tissue

IHC : human breast cancer tissue,

IF/ICC : HepG2 cells,

Notable Publications

Author	Pubmed ID	Journal	Application
Teruhiko Suzuki	39833356	Commun Biol	WB

Storage

Storage:

Store at -20°C. Stable for one year after shipment.

Storage Buffer:

PBS with 0.02% sodium azide and 50% glycerol pH 7.3.

Aliquoting is unnecessary for -20°C storage

*** 20ul sizes contain 0.1% BSA

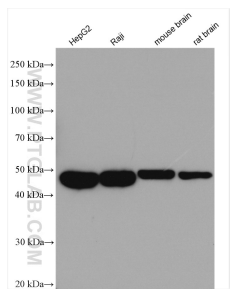
For technical support and original validation data for this product please contact:

T: 1 (888) 4PTGLAB (1-888-478-4522) (toll free in USA), or 1(312) 455-8498 (outside USA)

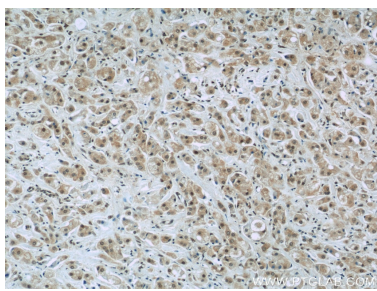
E: proteintech@ptglab.com
W: ptglab.com

This product is exclusively available under Proteintech Group brand and is not available to purchase from any other manufacturer.

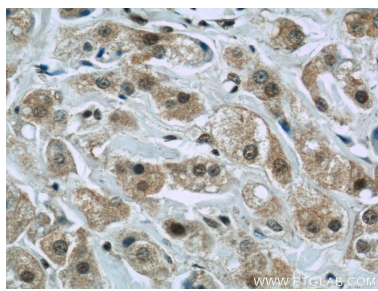
Selected Validation Data



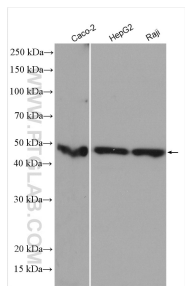
Various lysates were subjected to SDS PAGE followed by western blot with 22251-1-AP (FAM98B antibody) at dilution of 1:3000 incubated at room temperature for 1.5 hours.



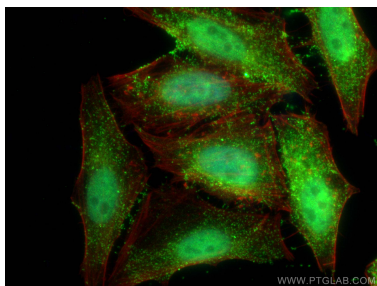
Immunohistochemical analysis of paraffin-embedded human breast cancer slide using 22251-1-AP (FAM98B Antibody) at dilution of 1:50.



Immunohistochemical analysis of paraffin-embedded human breast cancer slide using 22251-1-AP (FAM98B Antibody) at dilution of 1:50.



Various lysates were subjected to SDS PAGE followed by western blot with 22251-1-AP (FAM98B antibody) at dilution of 1:7000 incubated at room temperature for 1.5 hours.



Immunofluorescent analysis of (4% PFA) fixed HepG2 cells using FAM98B antibody (22251-1-AP) at dilution of 1:400 and CoraLite®488-Conjugated AffiniPure Goat Anti-Rabbit IgG(H+L), CL594-Phalloidin (red).