

PAX8 Polyclonal antibody

Catalog Number: 22255-1-AP

Basic Information

Catalog Number: 22255-1-AP	GenBank Accession Number: BC001060	Purification Method: Antigen affinity purification
Size: 150ul	GeneID (NCBI): 7849	
Source: Rabbit	UNIPROT ID: Q06710	
Isotype: IgG	Full Name: paired box 8	
Immunogen Catalog Number: AG17759	Calculated MW: 450 aa, 48 kDa	

Applications

Tested Applications:
WB, ELISA

Species Specificity:
human

Background Information

PAX8 is a member of the paired box (PAX) family of transcription factors, typically containing a paired box domain and a paired-type homeodomain. It is expressed during organogenesis of the thyroid gland, kidney and Mullerian system. It is thought to regulate the expression of Wilms tumor suppressor (WT1) gene and mutations in PAX8 have been associated with Wilms tumor cells, thyroid and ovarian carcinomas. PAX8 is a useful marker in distinguishing ovarian carcinomas from mammary carcinomas (PMID: 18724243). PAX8 is expressed in a high percentage of ovarian serous, endometrioid, and clear cell carcinomas, but only rarely in primary ovarian mucinous adenocarcinomas.

PAX8 has 5 isoforms with calculated MW 31kd, 34kd, 41kd, 43kd and 48kd. And there is a 60kd band corresponding to the electrophoretic mobility of PAX8 (PMID:15650356). Proteintech's 10336-1-AP antibody has cross-reactivities with the other PAX family members.

Storage

Storage:
Store at -20°C. Stable for one year after shipment.

Storage Buffer:
PBS with 0.02% sodium azide and 50% glycerol pH 7.3.

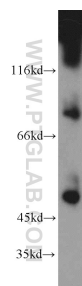
Aliquoting is unnecessary for -20°C storage

*** 20ul sizes contain 0.1% BSA

For technical support and original validation data for this product please contact:
T: 1 (888) 4PTGLAB (1-888-478-4522) (toll free in USA), or 1(312) 455-8498 (outside USA)
E: proteintech@ptglab.com
W: ptglab.com

This product is exclusively available under Proteintech Group brand and is not available to purchase from any other manufacturer.

Selected Validation Data



A2780 cells were subjected to SDS PAGE followed by western blot with 22255-1-AP (PAX8 antibody) at dilution of 1:1000 incubated at room temperature for 1.5 hours.