

For Research Use Only

ASF1B-specific Polyclonal antibody



Catalog Number: 22258-1-AP

Featured Product

2 Publications

Basic Information

Catalog Number: 22258-1-AP	GenBank Accession Number: BC010014	Purification Method: Antigen affinity purification
Size: 150ul, Concentration: 800 µg/ml by Nanodrop;	GeneID (NCBI): 55723	Recommended Dilutions: WB 1:500-1:2000 IHC 1:50-1:500 IF 1:20-1:200
Source: Rabbit	Full Name: ASF1 anti-silencing function 1 homolog B (<i>S. cerevisiae</i>)	
Isotype: IgG	Calculated MW: 202 aa, 22 kDa	
Immunogen Catalog Number: AG17763	Observed MW: 20-22 kDa	

Applications

Tested Applications:

IF, IHC, WB, ELISA

Cited Applications:

IF, WB

Species Specificity:

human

Cited Species:

human, mouse

Note-IHC: suggested antigen retrieval with TE buffer pH 9.0; (*) Alternatively, antigen retrieval may be performed with citrate buffer pH 6.0

Positive Controls:

WB : A431 cells, HEK-293 cells, HeLa cells

IHC : human lymphoma tissue,

IF : HeLa cells,

Background Information

ASF1B is a member of the H3/H4 family of histone chaperone proteins and is similar to the anti-silencing function-1 gene in yeast. The encoded protein is the substrate of the tousel-like kinase family of cell cycle-regulated kinases and may play a key role in modulating the nucleosome structure of chromatin by ensuring a constant supply of histones at sites of nucleosome assembly. This antibody specifically reacts with the 19kd ASF1B protein.

Notable Publications

Author	Pubmed ID	Journal	Application
Sumin Feng	35177609	Nat Commun	WB
Xuemei Wang	34906203	Epigenetics Chromatin	WB,IF

Storage

Storage:

Store at -20°C. Stable for one year after shipment.

Storage Buffer:

PBS with 0.02% sodium azide and 50% glycerol pH 7.3.

Aliquoting is unnecessary for -20°C storage

*** 20ul sizes contain 0.1% BSA

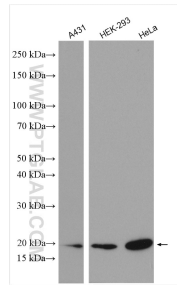
For technical support and original validation data for this product please contact:

T: 1 (888) 4PTGLAB (1-888-478-4522) (toll free in USA), or 1(312) 455-8498 (outside USA)

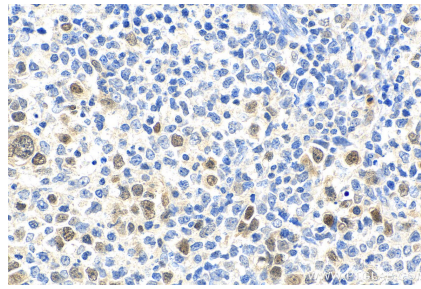
E: proteintech@ptglab.com
W: ptglab.com

This product is exclusively available under Proteintech Group brand and is not available to purchase from any other manufacturer.

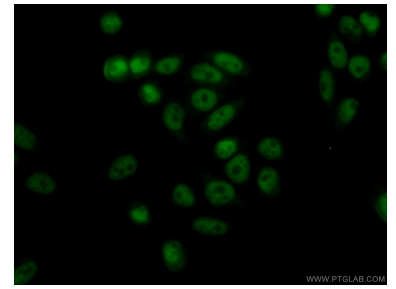
Selected Validation Data



Various lysates were subjected to SDS PAGE followed by western blot with 22258-1-AP (ASF1B-specific antibody) at dilution of 1:1000 incubated at room temperature for 1.5 hours.



Immunohistochemical analysis of paraffin-embedded human lymphoma tissue slide using 22258-1-AP (ASF1B-specific antibody) at dilution of 1:200 (under 40x lens). Heat mediated antigen retrieval with Tris-EDTA buffer (pH 9.0).



Immunofluorescent analysis of (10% Formaldehyde) fixed HeLa cells using 22258-1-AP (ASF1B antibody) at dilution of 1:50 and Alexa Fluor 488-conjugated AffiniPure Goat Anti-Rabbit IgG(H+L).