

For Research Use Only

ESPL1 Polyclonal antibody

Catalog Number: 22261-1-AP



Basic Information

Catalog Number:

22261-1-AP

Size:

150ul, Concentration: 800 ug/ml by Nanodrop;

Source:

Rabbit

Isotype:

IgG

GenBank Accession Number:

NM_012291

GeneID (NCBI):

9700

UNIPROT ID:

Q14674

Full Name:

extra spindle pole bodies homolog 1 (S. cerevisiae)

Calculated MW:

233 kDa

Observed MW:

170 kDa

Purification Method:

Antigen affinity purification

Recommended Dilutions:

WB: 1:500-1:1000

Applications

Tested Applications:

WB, ELISA

Species Specificity:

human

Positive Controls:

WB: A431 cells, Jurkat cells, Raji cells

Background Information

ESPL1 (Extra spindle poles-like 1 protein), also known as Separin, Separase, a cysteine endopeptidase, plays a vital role in the stable binding between sister chromatids before anaphase and their timely separation during anaphase, which is the key to chromosome inheritance (PMID: 34512713). ESPL1 expression is elevated and predicts poor outcomes in patients with various types of cancer, including breast cancer, glioma and endometrial cancer (PMID: 36465268). Full-length ESPL1 decreased after 30 min resulting in a ~ 170 kDa N-terminal (ESPL1N-term) and a ~ 60 kDa C-terminal polypeptide (ESPL1CC-term), reflecting ESPL1 activation and auto-cleavage (PMID: 30429481)

Storage

Storage:

Store at -20°C. Stable for one year after shipment.

Storage Buffer:

PBS with 0.02% sodium azide and 50% glycerol, pH7.3

Aliquoting is unnecessary for -20°C storage

*** 20ul sizes contain 0.1% BSA

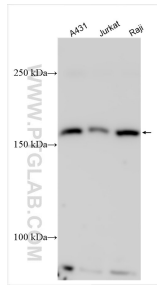
For technical support and original validation data for this product please contact:

T: 1 (888) 4PTGLAB (1-888-478-4522) (toll free in USA), or 1(312) 455-8498 (outside USA)

E: proteintech@ptglab.com
W: ptglab.com

This product is exclusively available under Proteintech Group brand and is not available to purchase from any other manufacturer.

Selected Validation Data



Various lysates were subjected to SDS PAGE followed by western blot with 22261-1-AP (ESPL1 antibody) at dilution of 1:800 incubated at room temperature for 1.5 hours.