

For Research Use Only

CALML6 Polyclonal antibody

Catalog Number: 22274-1-AP



Basic Information

Catalog Number: 22274-1-AP	GenBank Accession Number: NM_138705	Purification Method: Antigen affinity purification
Size: 150ul , Concentration: 600 µg/ml by Nanodrop and 540 µg/ml by Bradford method using BSA as the standard;	GeneID (NCBI): 163688	Recommended Dilutions: WB 1:500-1:1000 IHC 1:20-1:200
Source: Rabbit	Full Name: calmodulin-like 6	
Isotype: IgG	Calculated MW: 21 kDa	
	Observed MW: 21 kDa	

Applications

Tested Applications:
IHC, WB, ELISA

Species Specificity:
human, pig

Note-IHC: suggested antigen retrieval with TE buffer pH 9.0; (*) Alternatively, antigen retrieval may be performed with citrate buffer pH 6.0

Positive Controls:

WB: human heart tissue, pig heart tissue

IHC: human heart tissue, human prostate hyperplasia tissue

Background Information

CALML6, also named as CAGLP, CALGP, belongs to the calmodulin family and Calglandulin subfamily. It contains 4 EF-hand domains. The antibody is specific to CALML6.

Storage

Storage:

Store at -20°C. Stable for one year after shipment.

Storage Buffer:

PBS with 0.02% sodium azide and 50% glycerol pH 7.3.

Aliquoting is unnecessary for -20°C storage

***** 20ul sizes contain 0.1% BSA**

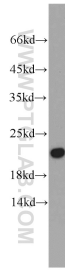
For technical support and original validation data for this product please contact:

T: 1 (888) 4PTGLAB (1-888-478-4522) (toll free in USA), or 1(312) 455-8498 (outside USA)

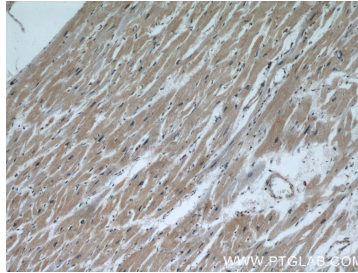
E: proteintech@ptglab.com
W: ptglab.com

This product is exclusively available under Proteintech Group brand and is not available to purchase from any other manufacturer.

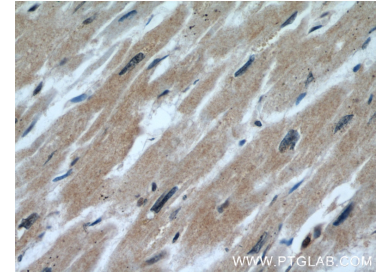
Selected Validation Data



human heart tissue were subjected to SDS PAGE followed by western blot with 22274-1-AP (CALML6 antibody) at dilution of 1:500 incubated at room temperature for 1.5 hours.



Immunohistochemical analysis of paraffin-embedded human heart using 22274-1-AP (CALML6 antibody) at dilution of 1:50 (under 10x lens).



Immunohistochemical analysis of paraffin-embedded human heart using 22274-1-AP (CALML6 antibody) at dilution of 1:50 (under 40x lens).