

For Research Use Only

# CALML6 Polyclonal antibody, PBS Only

Catalog Number: 22274-1-PBS



## Basic Information

**Catalog Number:**

22274-1-PBS

**Size:**

100ug, Concentration: 1 mg/ml by Nanodrop;

**Source:**

Rabbit

**Isotype:**

IgG

**GenBank Accession Number:**

NM\_138705

**GeneID (NCBI):**

163688

**UNIPROT ID:**

Q8TD86

**Full Name:**

calmodulin-like 6

**Calculated MW:**

21 kDa

**Observed MW:**

21 kDa

**Purification Method:**

Antigen affinity purification

## Applications

**Tested Applications:**

WB, IHC, Indirect ELISA

**Species Specificity:**

human, pig

## Background Information

CALML6, also named as CAGLP, CALGP, belongs to the calmodulin family and Calglandulin subfamily. It contains 4 EF-hand domains. The antibody is specific to CALML6.

## Storage

**Storage:**

Store at -80°C.

**Storage Buffer:**

PBS Only

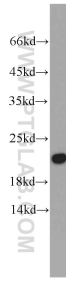
For technical support and original validation data for this product please contact:

T: 1 (888) 4PTGLAB (1-888-478-4522) (toll free in USA), or 1(312) 455-8498 (outside USA)

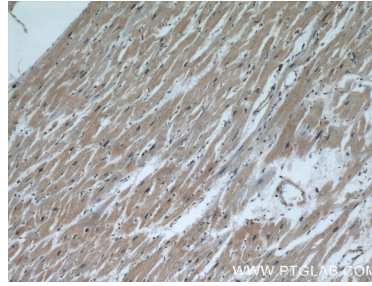
E: [proteintech@ptglab.com](mailto:proteintech@ptglab.com)  
W: [ptglab.com](http://ptglab.com)

**This product is exclusively available under Proteintech Group brand and is not available to purchase from any other manufacturer.**

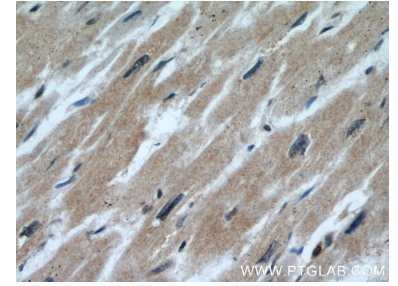
## Selected Validation Data



human heart tissue were subjected to SDS PAGE followed by western blot with 22274-1-AP (CALML6 antibody) at dilution of 1:500 incubated at room temperature for 1.5 hours. This data was developed using the same antibody clone with 22274-1-PBS in a different storage buffer formulation.



Immunohistochemical analysis of paraffin-embedded human heart using 22274-1-AP (CALML6 antibody) at dilution of 1:50 (under 10x lens). This data was developed using the same antibody clone with 22274-1-PBS in a different storage buffer formulation.



Immunohistochemical analysis of paraffin-embedded human heart using 22274-1-AP (CALML6 antibody) at dilution of 1:50 (under 40x lens). This data was developed using the same antibody clone with 22274-1-PBS in a different storage buffer formulation.