

For Research Use Only

CACNA1S Polyclonal antibody, PBS Only

Catalog Number: 22279-1-PBS



Basic Information

Catalog Number:

22279-1-PBS

Size:

100ug, Concentration: 1 mg/ml by Nanodrop;

Source:

Rabbit

Isotype:

IgG

GenBank Accession Number:

NM_000069

GeneID (NCBI):

779

UNIPROT ID:

Q13698

Full Name:

calcium channel, voltage-dependent, L type, alpha 1S subunit

Calculated MW:

212 kDa

Observed MW:

200-220 kDa

Purification Method:

Antigen affinity purification

Applications

Tested Applications:

WB, IHC, Indirect ELISA

Species Specificity:

human, mouse, rat

Background Information

CACNA1S, also named as CACH1, CACN1 and CACNL1A3, belongs to the calcium channel alpha-1 subunit (TC 1.A.1.11) family and CACNA1S subfamily. Voltage-sensitive calcium channels (VSCC) mediate the entry of calcium ions into excitable cells and are also involved in a variety of calcium-dependent processes, including muscle contraction, hormone or neurotransmitter release, gene expression, cell motility, cell division and cell death. CACNA1S gives rise to L-type calcium currents. Long-lasting (L-type) calcium channels belong to the 'high-voltage activated' (HVA) group. The antibody is specific to CACNA1S.

Storage

Storage:

Store at -80°C.

Storage Buffer:

PBS only, pH7.3

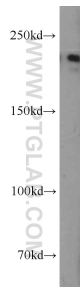
For technical support and original validation data for this product please contact:

T: 1 (888) 4PTGLAB (1-888-478-4522) (toll free in USA), or 1(312) 455-8498 (outside USA)

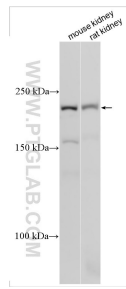
E: proteintech@ptglab.com
W: ptglab.com

This product is exclusively available under Proteintech Group brand and is not available to purchase from any other manufacturer.

Selected Validation Data



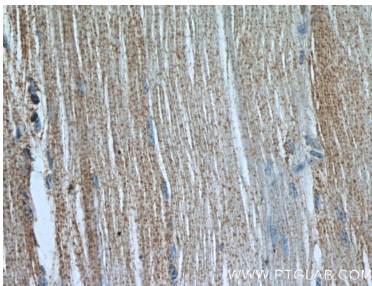
human brain tissue were subjected to SDS PAGE followed by western blot with 22279-1-AP (CACNA1S antibody) at dilution of 1:1000 incubated at room temperature for 1.5 hours. This data was developed using the same antibody clone with 22279-1-PBS in a different storage buffer formulation.



Various lysates were subjected to SDS PAGE followed by western blot with 22279-1-AP (CACNA1S antibody) at dilution of 1:1000 incubated at room temperature for 1.5 hours. This data was developed using the same antibody clone with 22279-1-PBS in a different storage buffer formulation.



Immunohistochemical analysis of paraffin-embedded human skeletal muscle slide using 22279-1-AP (CACNA1S Antibody) at dilution of 1:50 (under 10x lens). This data was developed using the same antibody clone with 22279-1-PBS in a different storage buffer formulation.



Immunohistochemical analysis of paraffin-embedded human skeletal muscle slide using 22279-1-AP (CACNA1S Antibody) at dilution of 1:50 (under 40x lens). This data was developed using the same antibody clone with 22279-1-PBS in a different storage buffer formulation.