

For Research Use Only

MYH7-specific Polyclonal antibody

Catalog Number: 22280-1-AP

Featured Product

47 Publications



Basic Information

| | | |
|---|--|---|
| Catalog Number: 22280-1-AP | GenBank Accession Number: NM_000257 | Purification Method: Antigen affinity purification |
| Size: 150ul , Concentration: 650 µg/ml by Nanodrop; | GeneID (NCBI): 4625 | Recommended Dilutions: WB 1:600-1:2000 IP 0.5-4.0 ug for 1.0-3.0 mg of total protein lysate IHC 1:20-1:200 IF 1:50-1:500 |
| Source: Rabbit | Full Name: myosin, heavy chain 7, cardiac muscle, beta | |
| Isotype: IgG | Calculated MW: 223 kDa Observed MW: 200-220 kDa | |

Applications

| | |
|---|---|
| Tested Applications: IF, IHC, IP, WB, ELISA | Positive Controls: |
| Cited Applications: IF, IHC, WB | WB : mouse heart tissue, |
| Species Specificity: human, mouse | IP : mouse heart tissue, |
| Cited Species: human, goat, rat, mouse, zebrafish, pig | IHC : mouse heart tissue, human skeletal muscle tissue |
| Note-IHC: suggested antigen retrieval with TE buffer pH 9.0; (*) Alternatively, antigen retrieval may be performed with citrate buffer pH 6.0 | IF : mouse heart tissue, mouse skeletal muscle tissue |

Background Information

Myosin is the major contractile protein of all eukaryotic cells, existing as a hexameric molecule composed of two myosin heavy chains (MHCs) that contain the catalytic sites for ATP hydrolysis, and four lower molecular weight myosin light chains. MYH7 encodes the slow/beta-cardiac myosin heavy chain (MHC), which is the major MHC isoform of cardiac ventricles. It is also expressed in slow, oxidative, type 1 muscle fibers of skeletal muscle. Numerous mutations of MYH7 have been linked to familial hypertrophic cardiomyopathy. This antibody can specifically recognize endogenous MYH7, not cross-reacting with other MHCs. (2523412, 14520662)

Notable Publications

| Author | Pubmed ID | Journal | Application |
|---------------|-----------|---------------------------|-------------|
| Shiyuan Huang | 32936696 | Am J Physiol Cell Physiol | WB |
| Teng Wu | 33015041 | Front Cell Dev Biol | WB,IHC |
| Yanan Pang | 34540911 | Front Cardiovasc Med | WB |

Storage

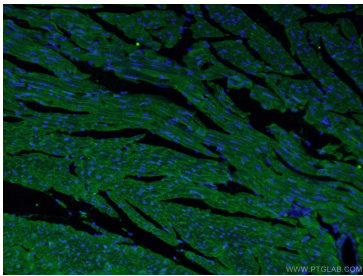
Storage:
Store at -20°C. Stable for one year after shipment.
Storage Buffer:
PBS with 0.02% sodium azide and 50% glycerol pH 7.3.
Aliquoting is unnecessary for -20°C storage

*** 20ul sizes contain 0.1% BSA

For technical support and original validation data for this product please contact:
T: 1 (888) 4PTGLAB (1-888-478-4522) (toll free in USA), or 1(312) 455-8498 (outside USA)
E: proteintech@ptglab.com
W: ptglab.com

This product is exclusively available under Proteintech Group brand and is not available to purchase from any other manufacturer.

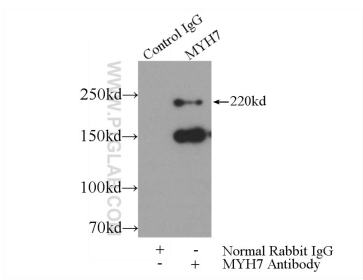
Selected Validation Data



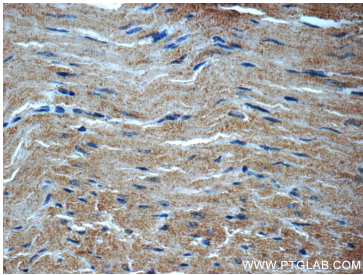
Immunofluorescent analysis of (4% PFA) fixed mouse heart tissue using 22280-1-AP (MYH7-specific antibody) at dilution of 1:50 and Alexa Fluor 488-conjugated AffiniPure Goat Anti-Rabbit IgG(H+L).



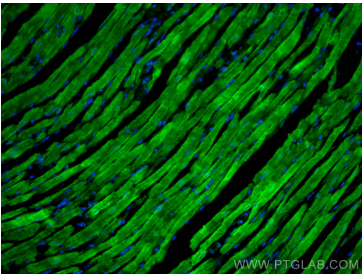
mouse heart tissue were subjected to SDS PAGE followed by western blot with 22280-1-AP (MYH7-specific antibody at dilution of 1:2000 incubated at room temperature for 1.5 hours.



IP Result of anti-MYH7-specific (IP:22280-1-AP, 5ug; Detection:22280-1-AP 1:300) with mouse heart tissue lysate 4000ug.



Immunohistochemical analysis of paraffin-embedded mouse heart tissue slide using 22280-1-AP (MYH7-specific antibody at dilution of 1:50 (under 40x lens).



Immunofluorescent analysis of (4% PFA) fixed mouse heart tissue using MYH7-specific antibody (22280-1-AP) at dilution of 1:200 and CoraLite® 488-Conjugated AffiniPure Goat Anti-Rabbit IgG(H+L).