

For Research Use Only

MYH7-specific Polyclonal antibody, PBS Only



Catalog Number: 22280-1-PBS

Featured Product

Basic Information

Catalog Number:

22280-1-PBS

Size:

100ug, Concentration: 1 mg/ml by Nanodrop;

Source:

Rabbit

Isotype:

IgG

GenBank Accession Number:

NM_000257

GeneID (NCBI):

4625

UNIPROT ID:

P12883

Full Name:

myosin, heavy chain 7, cardiac muscle, beta

Calculated MW:

223 kDa

Observed MW:

200-220 kDa

Purification Method:

Antigen affinity purification

Applications

Tested Applications:

WB, IHC, IF/ICC, IF-P, IP, Indirect ELISA

Species Specificity:

human, mouse, rat

Background Information

Myosin is the major contractile protein of all eukaryotic cells, existing as a hexameric molecule composed of two myosin heavy chains (MHCs) that contain the catalytic sites for ATP hydrolysis, and four lower molecular weight myosin light chains. MYH7 encodes the slow/beta-cardiac myosin heavy chain (MHC), which is the major MHC isoform of cardiac ventricles. It is also expressed in slow, oxidative, type 1 muscle fibers of skeletal muscle. Numerous mutations of MYH7 have been linked to familial hypertrophic cardiomyopathy. This antibody can specifically recognize endogenous MYH7, not cross-reacting with other MHCs (PMID: 2523412, 14520662). Due to the production of Heavy Meromyosin (HMM) during proteolysis of myosin, a band around 150 kDa may be detected, which may correspond to the HMM part of MYH7 (PMID: 14613868).

Storage

Storage:

Store at -80°C.

Storage Buffer:

PBS only, pH7.3

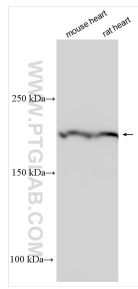
For technical support and original validation data for this product please contact:

T: 1 (888) 4PTGLAB (1-888-478-4522) (toll free in USA), or 1(312) 455-8498 (outside USA)

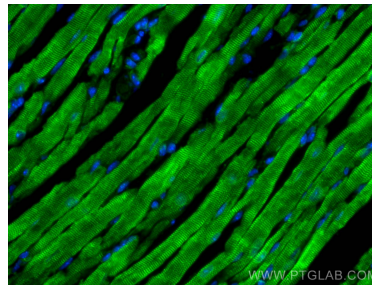
E: proteintech@ptglab.com
W: ptglab.com

This product is exclusively available under Proteintech Group brand and is not available to purchase from any other manufacturer.

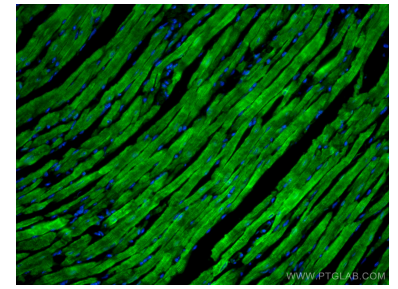
Selected Validation Data



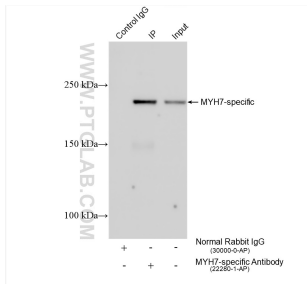
Various lysates were subjected to SDS PAGE followed by western blot with 22280-1-AP (MYH7-specific antibody) at dilution of 1:5000 incubated at room temperature for 1.5 hours. This data was developed using the same antibody clone with 22280-1-PBS in a different storage buffer formulation.



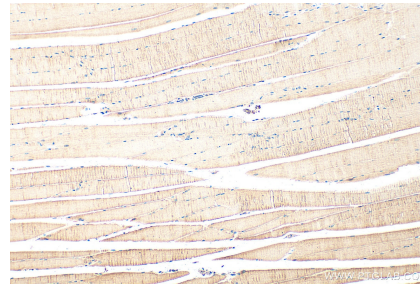
Immunofluorescent analysis of (4% PFA) fixed mouse heart tissue using MYH7-specific antibody (22280-1-AP) at dilution of 1:200 and CoraLite®488-Conjugated AffiniPure Goat Anti-Rabbit IgG(H+L). This data was developed using the same antibody clone with 22280-1-PBS in a different storage buffer formulation.



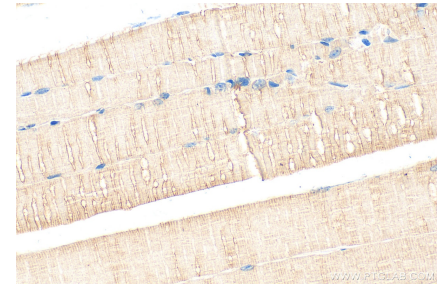
Immunofluorescent analysis of (4% PFA) fixed paraffin-embedded mouse heart tissue using MYH7-specific antibody (22280-1-AP) at dilution of 1:200 and CoraLite®488-Conjugated AffiniPure Goat Anti-Rabbit IgG(H+L). Heat mediated antigen retrieval with Tris-EDTA buffer (pH 9.0). This data was developed using the same antibody clone with 22280-1-PBS in a different storage buffer formulation.



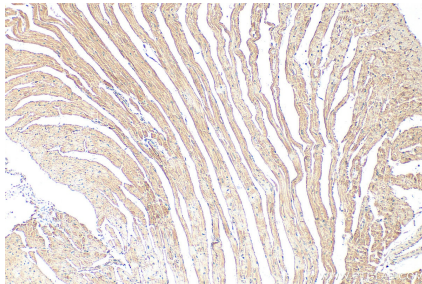
IP result of anti-MYH7-specific (IP:22280-1-AP, 4ug; Detection:22280-1-AP 1:3000) with mouse heart tissue lysate 1840 ug. This data was developed using the same antibody clone with 22280-1-PBS in a different storage buffer formulation.



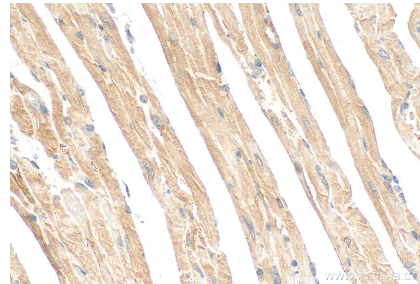
Immunohistochemical analysis of paraffin-embedded mouse skeletal muscle tissue slide using 22280-1-AP (MYH7-specific antibody) at dilution of 1:200 (under 10x lens). Heat mediated antigen retrieval with Tris-EDTA buffer (pH 9.0). This data was developed using the same antibody clone with 22280-1-PBS in a different storage buffer formulation.



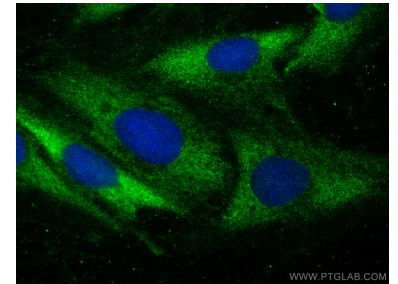
Immunohistochemical analysis of paraffin-embedded mouse skeletal muscle tissue slide using 22280-1-AP (MYH7-specific antibody) at dilution of 1:200 (under 40x lens). Heat mediated antigen retrieval with Tris-EDTA buffer (pH 9.0). This data was developed using the same antibody clone with 22280-1-PBS in a different storage buffer formulation.



Immunohistochemical analysis of paraffin-embedded mouse heart tissue slide using 22280-1-AP (MYH7-specific antibody) at dilution of 1:200 (under 10x lens). Heat mediated antigen retrieval with Tris-EDTA buffer (pH 9.0). This data was developed using the same antibody clone with 22280-1-PBS in a different storage buffer formulation.



Immunohistochemical analysis of paraffin-embedded mouse heart tissue slide using 22280-1-AP (MYH7-specific antibody) at dilution of 1:200 (under 40x lens). Heat mediated antigen retrieval with Tris-EDTA buffer (pH 9.0). This data was developed using the same antibody clone with 22280-1-PBS in a different storage buffer formulation.



Immunofluorescent analysis of (-20°C Ethanol) fixed H9C2 cells using MYH7-specific antibody (22280-1-AP) at dilution of 1:600 and CoraLite®488-Conjugated AffiniPure Goat Anti-Rabbit IgG(H+L) (SA00013-2). This data was developed using the same antibody clone with 22280-1-PBS in a different storage buffer formulation.