

For Research Use Only

MYH6 Polyclonal antibody, PBS Only

Catalog Number: 22281-1-PBS

Featured Product



Basic Information

Catalog Number:

22281-1-PBS

Size:

100ug, Concentration: 1 mg/ml by Nanodrop;

Source:

Rabbit

Isotype:

IgG

GenBank Accession Number:

NM_002471

GeneID (NCBI):

4624

UNIPROT ID:

P13533

Full Name:

myosin, heavy chain 6, cardiac muscle, alpha

Calculated MW:

224 kDa

Observed MW:

200-220 kDa

Purification Method:

Antigen affinity purification

Applications

Tested Applications:

WB, IHC, IF/ICC, IF-P, Indirect ELISA

Species Specificity:

human, mouse, rat

Background Information

MYH6 encodes the alpha-cardiac myosin heavy chain (aMHC) which is a major contractile protein exclusively expressed in the myocardium of the heart. Expression of MYH6 is down-regulated in cardiac myopathy and failing hearts. Defects in MYH6 lead to congenital heart disease (CHD), and a spectrum of phenotypes ranging from hypertrophic cardiomyopathy (HCM) and dilated cardiomyopathy (DCM). (15737621, 20656787)

Storage

Storage:

Store at -80°C.

Storage Buffer:

PBS only, pH7.3

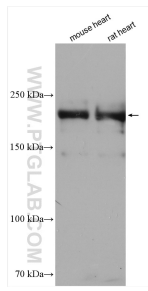
For technical support and original validation data for this product please contact:

T: 1 (888) 4PTGLAB (1-888-478-4522) (toll free in USA), or 1(312) 455-8498 (outside USA)

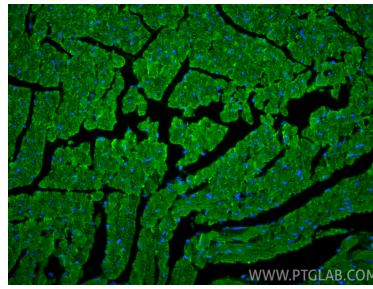
E: proteintech@ptglab.com
W: ptglab.com

This product is exclusively available under Proteintech Group brand and is not available to purchase from any other manufacturer.

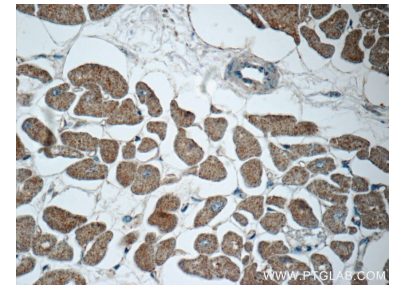
Selected Validation Data



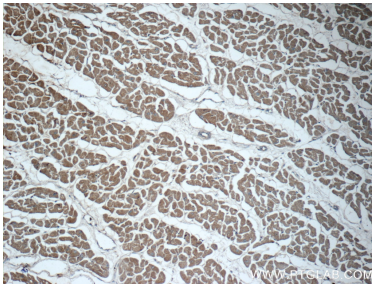
Various lysates were subjected to SDS PAGE followed by western blot with 22281-1-AP (MYH6 antibody) at dilution of 1:25000 incubated at room temperature for 1.5 hours. This data was developed using the same antibody clone with 22281-1-PBS in a different storage buffer formulation.



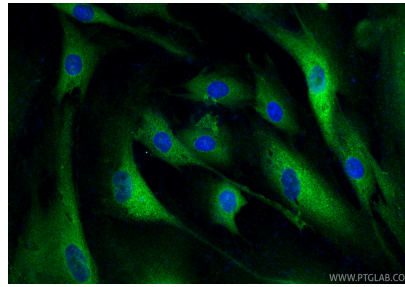
Immunofluorescent analysis of (4% PFA) fixed paraffin-embedded mouse heart tissue using MYH6 antibody (22281-1-AP) at dilution of 1:400 and CoraLite®488-Conjugated Goat Anti-Rabbit IgG(H+L) (SA00013-2). Heat mediated antigen retrieval with Tris-EDTA buffer (pH 9.0). This data was developed using the same antibody clone with 22281-1-PBS in a different storage buffer formulation.



Immunohistochemical analysis of paraffin-embedded human heart tissue slide using 22281-1-AP (MYH6 Antibody) at dilution of 1:50 (under 40x lens). This data was developed using the same antibody clone with 22281-1-PBS in a different storage buffer formulation.



Immunohistochemical analysis of paraffin-embedded human heart tissue slide using 22281-1-AP (MYH6 Antibody) at dilution of 1:50 (under 10x lens). This data was developed using the same antibody clone with 22281-1-PBS in a different storage buffer formulation.



Immunofluorescent analysis of (4% PFA) fixed HSkMC cells using MYH6 antibody (22281-1-AP) at dilution of 1:400 and CoraLite®488-Conjugated Goat Anti-Rabbit IgG(H+L) (SA00013-2). This data was developed using the same antibody clone with 22281-1-PBS in a different storage buffer formulation.