

For Research Use Only

MYH1-motor domain Polyclonal antibody



Catalog Number: 22282-1-AP

Basic Information

Catalog Number: 22282-1-AP	GenBank Accession Number: NM_005963	Purification Method: Antigen affinity purification
Size: 150ul , Concentration: 700 µg/ml by Nanodrop and 413 µg/ml by Bradford method using BSA as the standard;	GeneID (NCBI): 4619	Recommended Dilutions: WB 1:500-1:2000 IHC 1:20-1:200
Source: Rabbit	Full Name: myosin, heavy chain 1, skeletal muscle, adult	
Isotype: IgG	Calculated MW: 223 kDa	
	Observed MW: 223 kDa	

Applications

Tested Applications: FC, IHC, WB, ELISA	Positive Controls:
Species Specificity: human	WB : human skeletal muscle tissue, IHC : human skeletal muscle tissue,

Note-IHC: suggested antigen retrieval with TE buffer pH 9.0; (*) Alternatively, antigen retrieval may be performed with citrate buffer pH 6.0

Background Information

MYH1 (MyHC-2x) encodes the IIX isoform of myosin heavy chain (MyHC). Myosin is a large, ubiquitous, motor protein that generates force through its interaction with actin, thus involving it in a number of cellular processes including cytokinesis, karyokinesis, cell migration, and muscle contraction. Muscle fibers can be divided as type 1 (slow) and type 2 (fast). MYH1 belongs to type 2.

Storage

Storage:
Store at -20°C. Stable for one year after shipment.
Storage Buffer:
PBS with 0.02% sodium azide and 50% glycerol pH 7.3.
Aliquoting is unnecessary for -20°C storage

*** 20ul sizes contain 0.1% BSA

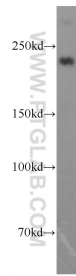
For technical support and original validation data for this product please contact:

T: 1 (888) 4PTGLAB (1-888-478-4522) (toll free in USA), or 1(312) 455-8498 (outside USA)

E: proteintech@ptglab.com
W: ptglab.com

This product is exclusively available under Proteintech Group brand and is not available to purchase from any other manufacturer.

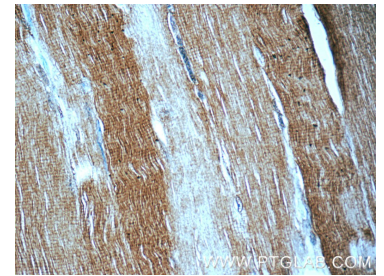
Selected Validation Data



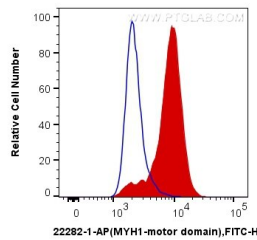
human skeletal muscle tissue were subjected to SDS PAGE followed by western blot with 22282-1-AP (MYH1 Antibody) at dilution of 1:1000 incubated at room temperature for 1.5 hours.



Immunohistochemical analysis of paraffin-embedded human skeletal muscle tissue slide using 22282-1-AP (MYH1 Antibody) at dilution of 1:50 (under 10x lens).



Immunohistochemical analysis of paraffin-embedded human skeletal muscle tissue slide using 22282-1-AP (MYH1 Antibody) at dilution of 1:50 (under 40x lens).



1X10⁶ C2C12 cells were intracellularly stained with 0.4 ug Anti-Human MYH1-motor domain (22282-1-AP) and CoraLite[®]488-Conjugated AffiniPure Goat Anti-Rabbit IgG(H+L) at dilution 1:1000 (red), or 0.4 ug Control Antibody. Cells were fixed with 4% PFA and permeabilized with Flow Cytometry Perm Buffer (PF00011-C).