

For Research Use Only

CC2D2A Polyclonal antibody

Catalog Number: 22293-1-AP

4 Publications



Basic Information

Catalog Number:

22293-1-AP

Size:

150ul, Concentration: 900 ug/ml by Nanodrop and 540 ug/ml by Bradford method using BSA as the standard;

Source:

Rabbit

Isotype:

IgG

GenBank Accession Number:

NM_020785

GeneID (NCBI):

57545

UNIPROT ID:

Q9P2K1

Full Name:

coiled-coil and C2 domain containing 2A

Calculated MW:

186 kDa

Observed MW:

190 kDa

Purification Method:

Antigen affinity purification

Recommended Dilutions:

WB 1:1000-1:4000

IHC 1:20-1:200

IF/ICC 1:20-1:200

Applications

Tested Applications:

WB, IHC, IF/ICC, ELISA

Cited Applications:

WB, IF

Species Specificity:

human, mouse, rat

Cited Species:

human

Positive Controls:

WB : mouse brain tissue, rat brain tissue

IHC : human lung cancer tissue,

IF/ICC : hTERT-RPE1 cells,

Note-IHC: suggested antigen retrieval with TE buffer pH 9.0; (*) Alternatively, antigen retrieval may be performed with citrate buffer pH 6.0

Background Information

CC2D2A, also named as KIAA1345, may be involved in cilia formation. CC2D2A encodes a protein with similar overall structure to RPGRIP1L, including coiled-coil domains, a C2 domain, and an overlapping centrosomal protein-related domain. CC2D2A physically interacts with CEP290, and loss of Cc2d2a function in the zebrafish sentinel mutant results in abnormal body shape and pronephric (kidney) cysts that is strongly exacerbated by knockdown of Cep290 function. (PMID:19778711) Defects in CC2D2A are the cause of Meckel syndrome type 6 (MKS6). Defects in CC2D2A are the cause of Joubert syndrome type 9 (JBT59). The antibody is specific to CC2D2A.

Notable Publications

Author	Pubmed ID	Journal	Application
Quynh P H Nguyen	33038334	Dev Cell	IF
Daimin Xiao	27959436	Mol Med Rep	
Manu Ahmed	39282264	bioRxiv	WB,IF

Storage

Storage:

Store at -20°C. Stable for one year after shipment.

Storage Buffer:

PBS with 0.02% sodium azide and 50% glycerol pH 7.3.

Aliquoting is unnecessary for -20°C storage

*** 20ul sizes contain 0.1% BSA

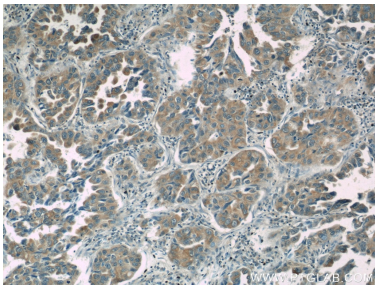
For technical support and original validation data for this product please contact:

T: 1 (888) 4PTGLAB (1-888-478-4522) (toll free in USA), or 1(312) 455-8498 (outside USA)

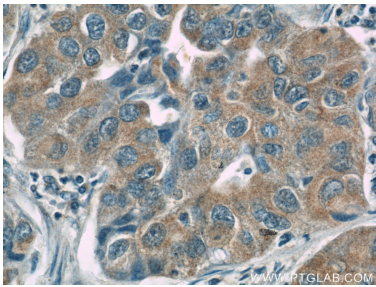
E: proteintech@ptglab.com
W: ptglab.com

This product is exclusively available under Proteintech Group brand and is not available to purchase from any other manufacturer.

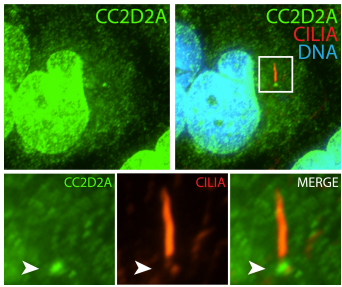
Selected Validation Data



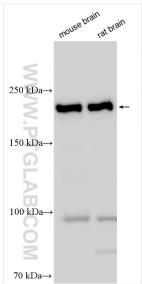
Immunohistochemical analysis of paraffin-embedded human lung cancer slide using 22293-1-AP (CC2D2A Antibody) at dilution of 1:50 (under 10x lens).



Immunohistochemical analysis of paraffin-embedded human lung cancer slide using 22293-1-AP (CC2D2A Antibody) at dilution of 1:50 (under 40x lens).



IF result (strong nucleus and the base stain) of anti-CC2D2A (22293-1-AP, 1:50) with serum-starved hTERT-RPE1 (MeOH fixed) by Dr. Moshe Kim.



Various lysates were subjected to SDS PAGE followed by western blot with 22293-1-AP (CC2D2A antibody) at dilution of 1:2000 incubated at room temperature for 1.5 hours.