

For Research Use Only

COL6A6 Polyclonal antibody

Catalog Number: 22302-1-AP

1 Publications



Basic Information

Catalog Number: 22302-1-AP	GenBank Accession Number: NM_001102608	Purification Method: Antigen affinity purification
Size: 150ul , Concentration: 600 ug/ml by Nanodrop;	GeneID (NCBI): 131873	Recommended Dilutions: WB 1:500-1:2000 IHC 1:50-1:500
Source: Rabbit	UNIPROT ID: A6NMZ7	
Isotype: IgG	Full Name: collagen type VI alpha 6	
	Calculated MW: 247 kDa	
	Observed MW: 167 kDa, 250 kDa	

Applications

Tested Applications: WB, IHC, ELISA	Positive Controls: WB : mouse heart tissue, mouse skeletal muscle tissue IHC : mouse heart tissue, mouse lung tissue
Cited Applications: WB	
Species Specificity: human, Mouse	
Cited Species: mouse	
Note-IHC: suggested antigen retrieval with TE buffer pH 9.0; (*) Alternatively, antigen retrieval may be performed with citrate buffer pH 6.0	

Background Information

Collagen type VI alpha 6 chain (COL6A6) belongs to the collagen VI (COL6) family which acts as a vital role in the extracellular matrix. COL6A6 encodes a 2,262-amino acid protein that contains multiple von Willebrand factor domains and forms a component of the basal lamina of epithelial cells (PMID: 33747955). COL6A6 is a novel tumor suppressor gene in NSCLC and can serve as a potentially valuable prognostic biomarker and therapeutic target for NSCLC (PMID: 35116307).

Notable Publications

Author	Pubmed ID	Journal	Application
Hangyu Zhong	39356241	J Agric Food Chem	WB

Storage

Storage:
Store at -20°C. Stable for one year after shipment.
Storage Buffer:
PBS with 0.02% sodium azide and 50% glycerol pH 7.3.
Aliquoting is unnecessary for -20°C storage

*** 20ul sizes contain 0.1% BSA

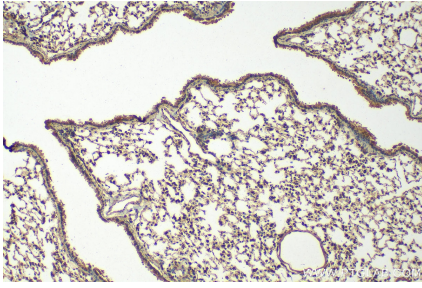
For technical support and original validation data for this product please contact:

T: 1 (888) 4PTGLAB (1-888-478-4522) (toll free in USA), or 1(312) 455-8498 (outside USA)

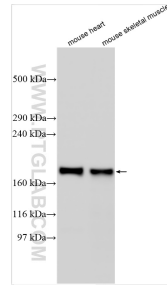
E: proteintech@ptglab.com
W: ptglab.com

This product is exclusively available under Proteintech Group brand and is not available to purchase from any other manufacturer.

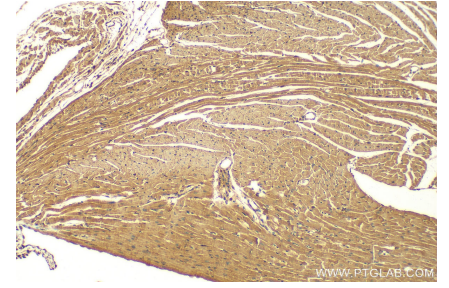
Selected Validation Data



Immunohistochemical analysis of paraffin-embedded mouse lung tissue slide using 22302-1-AP (COL6A6 antibody) at dilution of 1:200 (under 10x lens). Heat mediated antigen retrieval with Tris-EDTA buffer (pH 9.0).



Various lysates were subjected to SDS PAGE followed by western blot with 22302-1-AP (COL6A6 antibody) at dilution of 1:1000 incubated at room temperature for 1.5 hours.



Immunohistochemical analysis of paraffin-embedded mouse heart tissue slide using 22302-1-AP (COL6A6 antibody) at dilution of 1:200 (under 10x lens). Heat mediated antigen retrieval with Tris-EDTA buffer (pH 9.0).