

For Research Use Only

# Amylin Polyclonal antibody, PBS Only

Catalog Number: 22305-1-PBS



## Basic Information

Catalog Number:

22305-1-PBS

Size:

100ug, Concentration: 1 mg/ml by Nanodrop;

Source:

Rabbit

Isotype:

IgG

GenBank Accession Number:

NM\_000415

GeneID (NCBI):

3375

UNIPROT ID:

P10997

Full Name:

islet amyloid polypeptide

Calculated MW:

10 kDa

Purification Method:

Antigen Affinity purified

## Applications

Tested Applications:

IHC, Indirect ELISA

Species Specificity:

human, mouse, rat

## Background Information

IAPP, also known as Amylin, is commonly found in pancreatic islets of patients suffering diabetes mellitus type II, or harboring a tumor of the pancreas that is derived from beta cells and secretes INS. IAPP is co-secreted with INS by pancreatic  $\beta$ -cells and largely contributes to glycemic control. Studies suggest that this protein, like the related beta-amyloid (A $\beta$ ) associated with Alzheimer's disease, can induce apoptotic cell-death in particular cultured cells, an effect that may be relevant to the development of type II diabetes.

## Storage

Storage:

Store at -80°C.

Storage Buffer:

PBS only, pH7.3

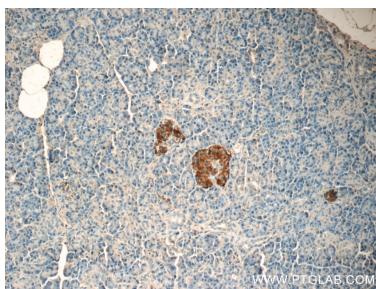
For technical support and original validation data for this product please contact:

T: 1 (888) 4PTGLAB (1-888-478-4522) (toll free in USA), or 1(312) 455-8498 (outside USA)

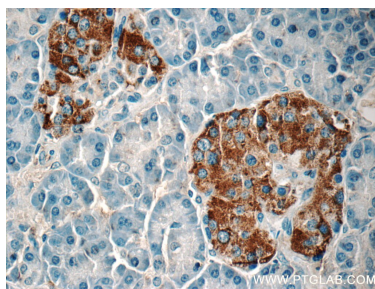
E: [proteintech@ptglab.com](mailto:proteintech@ptglab.com)  
W: [ptglab.com](http://ptglab.com)

This product is exclusively available under Proteintech Group brand and is not available to purchase from any other manufacturer.

## Selected Validation Data



Immunohistochemical analysis of paraffin-embedded human pancreas tissue slide using 22305-1-AP (Amylin Antibody) at dilution of 1:50 (under 10x lens). This data was developed using the same antibody clone with 22305-1-PBS in a different storage buffer formulation.



Immunohistochemical analysis of paraffin-embedded human pancreas tissue slide using 22305-1-AP (Amylin Antibody) at dilution of 1:50 (under 40x lens). This data was developed using the same antibody clone with 22305-1-PBS in a different storage buffer formulation.