

For Research Use Only

NPVF Polyclonal antibody

Catalog Number: 22311-1-AP



Basic Information

Catalog Number: 22311-1-AP	GenBank Accession Number: NM_022150	Purification Method: Antigen Affinity purified
Size: 150ul , Concentration: 600 ug/ml by Nanodrop and 273 ug/ml by Bradford method using BSA as the standard;	GeneID (NCBI): 64111	Recommended Dilutions: IHC 1:20-1:200
Source: Rabbit	UNIPROT ID: Q9HCQ7	
Isotype: IgG	Full Name: neuropeptide VF precursor	
	Calculated MW: 22 kDa	

Applications

Tested Applications: IHC, ELISA	Positive Controls:
Species Specificity: human	IHC : human kidney tissue, human hypothalamus tissue

Note-IHC: suggested antigen retrieval with TE buffer pH 9.0; (*) Alternatively, antigen retrieval may be performed with citrate buffer pH 6.0

Background Information

The human RFamide-related peptide gene, RFRP (also designated NPVF or C7orf9), is responsible for encoding three small neuropeptides designated NPSF, RFRP-1 RFRP-2 and RFRP-3 (NPVF). Neuropeptide RFRP-1 acts as a potent negative regulator of gonadotropin synthesis and secretion. Neuropeptides NPSF and NPVF efficiently inhibit forskolin-induced production of cAMP, but RFRP-2 shows no inhibitory activity. Neuropeptide RFRP-1 induces secretion of prolactin in rats. Neuropeptide NPVF blocks morphine-induced analgesia. This antibody can recognize neuropeptide VF precursor and neuropeptide NPSF.

Storage

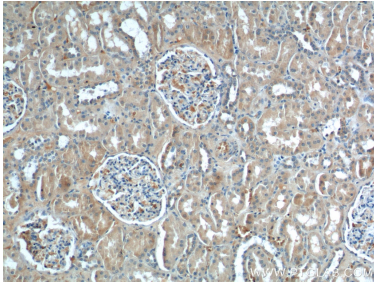
Storage:
Store at -20°C. Stable for one year after shipment.
Storage Buffer:
PBS with 0.02% sodium azide and 50% glycerol pH 7.3.
Aliquoting is unnecessary for -20°C storage

*** 20ul sizes contain 0.1% BSA

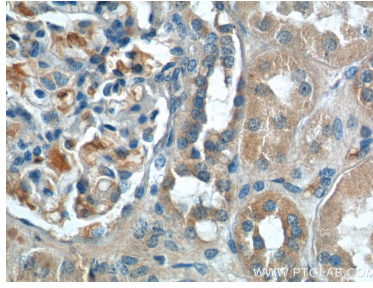
For technical support and original validation data for this product please contact:
T: 1 (888) 4PTGLAB (1-888-478-4522) (toll free in USA), or 1(312) 455-8498 (outside USA)
E: proteintech@ptglab.com
W: ptglab.com

This product is exclusively available under Proteintech Group brand and is not available to purchase from any other manufacturer.

Selected Validation Data



Immunohistochemical analysis of paraffin-embedded human kidney tissue slide using 22311-1-AP (NPSF antibody at dilution of 1:200 (under 10x lens).



Immunohistochemical analysis of paraffin-embedded human kidney tissue slide using 22311-1-AP (NPSF antibody at dilution of 1:200 (under 40x lens).