

P glycoprotein Polyclonal antibody

Catalog Number: 22336-1-AP

72 Publications

Basic Information

Catalog Number: 22336-1-AP	GenBank Accession Number: BC130424	Purification Method: Antigen affinity purification
Size: 150ul, Concentration: 600 µg/ml by Nanodrop;	GeneID (NCBI): 5243	Recommended Dilutions: WB 1:500-1:1000 IP 0.5-4.0 ug for 1.0-3.0 mg of total protein lysate IHC 1:50-1:500
Source: Rabbit	Full Name: ATP-binding cassette, sub-family B (MDR/TAP), member 1	
Isotype: IgG	Calculated MW: 1280 aa, 142 kDa	
Immunogen Catalog Number: AG17811	Observed MW: 130-150 kDa	

Applications

Tested Applications: IHC, IP, WB, ELISA	Positive Controls:
Cited Applications: CoIP, FC, IF, IHC, IP, WB	WB: unboiled HeLa cells, unboiled HepG2 cells
Species Specificity: human	IP: human placenta tissue,
Cited Species: human, mouse, pig	IHC: human liver cancer tissue, human kidney tissue
Note-IHC: suggested antigen retrieval with TE buffer pH 9.0; (*) Alternatively, antigen retrieval may be performed with citrate buffer pH 6.0	

Background Information

ABCB1 (also known as P-gp/ P-glycoprotein, MDR1/multidrug-resistance 1) is a plasma membrane protein first discovered in multidrug resistant tumor cells. ABCB1 can extrude a large number of medically relevant compounds from cells and causes drug resistance. ABCB1 is expressed in a variety of human cancers as well as normal tissues including brain, and placenta. Overexpression of ABCB1 correlates with a negative prognosis in several types of cancer. For optimal WB detection with 22336-1-AP, we recommend to avoid boiling the sample after lysis.

Notable Publications

Author	Pubmed ID	Journal	Application
Kaili Liu	33007707	Transl Oncol	WB, IF, IHC
Dongya Chai	32963175	Biol Pharm Bull	WB
Y Q Jiang	27706681	Genet Mol Res	WB

Storage

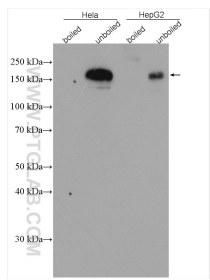
Storage:
Store at -20°C. Stable for one year after shipment.
Storage Buffer:
PBS with 0.02% sodium azide and 50% glycerol pH 7.3.
Aliquoting is unnecessary for -20°C storage

*** 20ul sizes contain 0.1% BSA

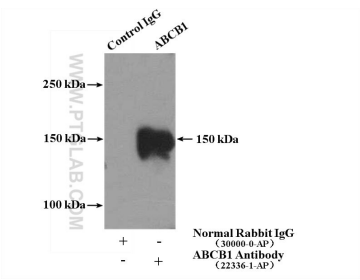
For technical support and original validation data for this product please contact:
T: 1 (888) 4PTGLAB (1-888-478-4522) (toll free in USA), or 1(312) 455-8498 (outside USA)
E: proteintech@ptglab.com
W: ptglab.com

This product is exclusively available under Proteintech Group brand and is not available to purchase from any other manufacturer.

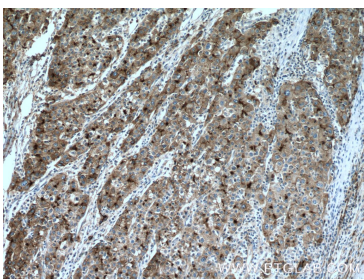
Selected Validation Data



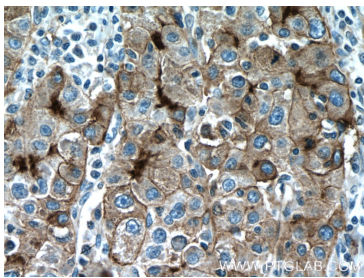
Various lysates were subjected to SDS PAGE followed by western blot with 22336-1-AP (P glycoprotein antibody) at dilution of 1:500 incubated at room temperature for 1.5 hours.



IP Result of anti-P glycoprotein (IP:22336-1-AP, 4ug; Detection:22336-1-AP 1:300) with human placenta tissue lysate 4000ug.



Immunohistochemical analysis of paraffin-embedded human liver cancer tissue slide using 22336-1-AP (P glycoprotein antibody at dilution of 1:500 (under 10x lens). Heat mediated antigen retrieval with Tris-EDTA buffer (pH 9.0).



Immunohistochemical analysis of paraffin-embedded human liver cancer tissue slide using 22336-1-AP (P glycoprotein antibody at dilution of 1:500 (under 40x lens). Heat mediated antigen retrieval with Tris-EDTA buffer (pH 9.0).