

For Research Use Only

CCL4/MIP-1 beta Polyclonal antibody

Catalog Number: 22352-1-AP



Basic Information

Catalog Number:

22352-1-AP

Size:

150ul , Concentration: 700 ug/ml by Nanodrop and 400 ug/ml by Bradford method using BSA as the standard;

Source:

Rabbit

Isotype:

IgG

Immunogen Catalog Number:

AG17928

GenBank Accession Number:

BC107433

GeneID (NCBI):

6351

UNIPROT ID:

P13236

Full Name:

chemokine (C-C motif) ligand 4

Calculated MW:

92 aa, 10 kDa

Observed MW:

11 kDa

Purification Method:

Antigen affinity purification

Recommended Dilutions:

WB 1:500-1:1000

Applications

Tested Applications:

WB, ELISA

Species Specificity:

human

Positive Controls:

WB : PMA, LPS and Brefeldin A treated THP-1 cells,

Background Information

CCL4, also known as Macrophage inflammatory protein-1 β (MIP-1 β), is a CC chemokine with specificity for CCR5 receptors, and is one of the major HIV-suppressive factors produced by CD8 $^{+}$ T-cells. MIP-1 β is an acidic protein composed of 69 amino acids that is produced by many cells, particularly macrophages, dendritic cells, and lymphocytes. MIP-1 β is responsible for the activation of PMN and is involved in acute neutrophilic inflammation. Recombinant MIP-1 β induces a dose-dependent inhibition of different strains of HIV-1, HIV-2, and simian immunodeficiency virus (SIV).

Storage

Storage:

Store at -20°C. Stable for one year after shipment.

Storage Buffer:

PBS with 0.02% sodium azide and 50% glycerol pH 7.3.

Aliquoting is unnecessary for -20°C storage

*** 20ul sizes contain 0.1% BSA

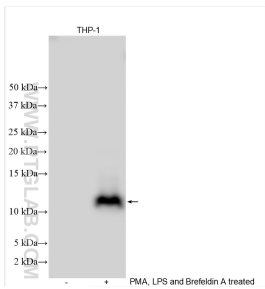
For technical support and original validation data for this product please contact:

T: 1 (888) 4PTGLAB (1-888-478-4522) (toll free in USA), or 1(312) 455-8498 (outside USA)

E: proteintech@ptglab.com
W: ptglab.com

This product is exclusively available under Proteintech Group brand and is not available to purchase from any other manufacturer.

Selected Validation Data



Untreated, PMA, LPS, and Brefeldin A treated THP-1 cells were subjected to SDS PAGE followed by western blot with 22352-1-AP (CCL4/MIP-1 beta antibody) at dilution of 1:600 incubated at room temperature for 1.5 hours.