

For Research Use Only

# GYS2 Polyclonal antibody

Catalog Number: 22371-1-AP

14 Publications



## Basic Information

### Catalog Number:

22371-1-AP

### Size:

150ul, Concentration: 900 µg/ml by Nanodrop;

### Source:

Rabbit

### Isotype:

IgG

### Immunogen Catalog Number:

AG18012

### GenBank Accession Number:

BC126310

### GeneID (NCBI):

2998

### Full Name:

glycogen synthase 2 (liver)

### Calculated MW:

703 aa, 81 kDa

### Observed MW:

81 kDa

### Purification Method:

Antigen affinity purification

### Recommended Dilutions:

WB 1:2000-1:16000

IP 0.5-4.0 µg for IP and 1:500-1:2000 for WB

IHC 1:50-1:500

## Applications

### Tested Applications:

IHC, IP, WB, ELISA

### Cited Applications:

IHC, WB

### Species Specificity:

human, mouse, rat

### Cited Species:

human, rat, mouse

**Note-IHC: suggested antigen retrieval with TE buffer pH 9.0; (\*) Alternatively, antigen retrieval may be performed with citrate buffer pH 6.0**

### Positive Controls:

WB: mouse liver tissue, mouse kidney tissue, rat liver tissue

IP: rat liver tissue,

IHC: human liver tissue,

## Background Information

## Notable Publications

Author	Pubmed ID	Journal	Application
Zejian Liu	36063868	Metabolism	WB
Omer Keinan	34707293	Nature	WB
Xiang Zhang	36396934	Nat Commun	WB, IHC

## Storage

### Storage:

Store at -20°C. Stable for one year after shipment.

### Storage Buffer:

PBS with 0.02% sodium azide and 50% glycerol pH 7.3.

Aliquoting is unnecessary for -20°C storage

\*\*\* 20ul sizes contain 0.1% BSA

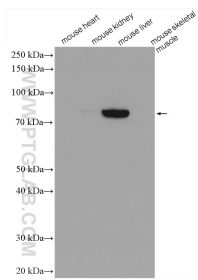
For technical support and original validation data for this product please contact:

T: 1 (888) 4PTGLAB (1-888-478-4522) (toll free in USA), or 1(312) 455-8498 (outside USA)

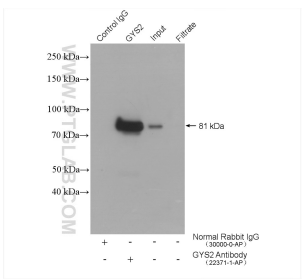
E: [proteintech@ptglab.com](mailto:proteintech@ptglab.com)  
W: [ptglab.com](http://ptglab.com)

This product is exclusively available under Proteintech Group brand and is not available to purchase from any other manufacturer.

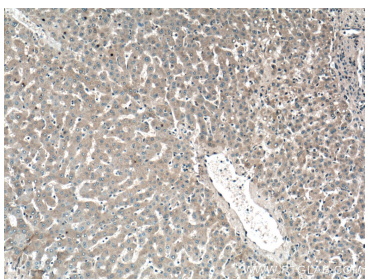
Selected Validation Data



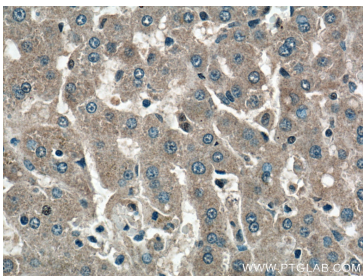
Various lysates were subjected to SDS PAGE followed by western blot with 22371-1-AP (GYS2 antibody) at dilution of 1:8000 incubated at room temperature for 1.5 hours. Mouse heart/ kidney/ skeletal muscle are negative control.



IP result of anti-GYS2 (IP:22371-1-AP, 4ug; Detection:22371-1-AP 1:1000) with rat liver tissue lysate 4000 ug.



Immunohistochemical analysis of paraffin-embedded human liver tissue slide using 22371-1-AP (GYS2 antibody) at dilution of 1:200 (under 10x lens).



Immunohistochemical analysis of paraffin-embedded human liver tissue slide using 22371-1-AP (GYS2 antibody) at dilution of 1:200 (under 40x lens).