

For Research Use Only

DCP1A Polyclonal antibody

Catalog Number: 22373-1-AP

7 Publications



Basic Information

Catalog Number:

22373-1-AP

Size:

150ul, Concentration: 800 ug/ml by Nanodrop;

Source:

Rabbit

Isotype:

IgG

Immunogen Catalog Number:

AG18027

GenBank Accession Number:

BC007439

GeneID (NCBI):

55802

UNIPROT ID:

Q9NPI6

Full Name:

DCP1 decapping enzyme homolog A (S. cerevisiae)

Calculated MW:

582 aa, 63 kDa

Observed MW:

70 kDa

Purification Method:

Antigen Affinity purified

Recommended Dilutions:

WB 1:2000-1:10000

IP 0.5-4.0 ug for 1.0-3.0 mg of total protein lysate

IHC 1:20-1:200

IF/ICC 1:200-1:800

Applications

Tested Applications:

WB, IHC, IF/ICC, FC (Intra), IP, ELISA

Cited Applications:

WB, IF, IP, RIP

Species Specificity:

human, mouse, rat

Cited Species:

human, mouse

Positive Controls:

WB: HEK-293 cells, mouse brain tissue, mouse lung tissue, Jurkat cells, MCF-7 cells, rat brain tissue

IP: mouse brain tissue,

IHC: mouse lung tissue,

IF/ICC: HepG2 cells,

Note-IHC: suggested antigen retrieval with TE buffer pH 9.0; (*) Alternatively, antigen retrieval may be performed with citrate buffer pH 6.0

Background Information

DCP1 decapping enzyme homolog A (S. cerevisiae), known as mRNA-decapping enzyme 1A (DCP1A), is necessary for the degradation of mRNAs, both in normal mRNA turnover and in nonsense-mediated mRNA decay. Removes the 7-methyl guanine cap structure from mRNA molecules, yielding a 5'-phosphorylated mRNA fragment and 7m-GDP. Contributes to the transactivation of target genes after stimulation by TGFβ1. This antibody specifically reacts with the 70kd DCP1A protein.

Notable Publications

Author	Pubmed ID	Journal	Application
Dongxu Jiang	29537490	FEBS Lett	WB, IF
Lei Lei	39358443	Commun Biol	RIP
Qihang Peng	39022804	J Proteome Res	WB

Storage

Storage:

Store at -20°C. Stable for one year after shipment.

Storage Buffer:

PBS with 0.02% sodium azide and 50% glycerol, pH7.3

Aliquoting is unnecessary for -20°C storage

*** 20ul sizes contain 0.1% BSA

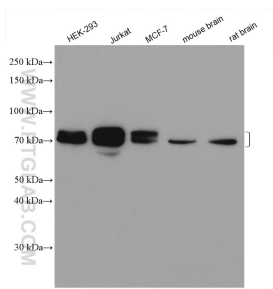
For technical support and original validation data for this product please contact:

T: 1 (888) 4PTGLAB (1-888-478-4522) (toll free in USA), or 1(312) 455-8498 (outside USA)

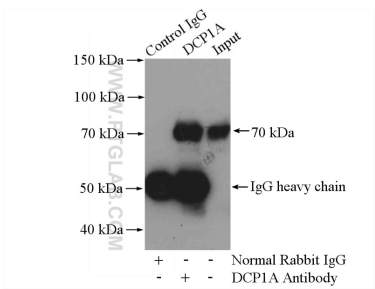
E: proteintech@ptglab.com
W: ptglab.com

This product is exclusively available under Proteintech Group brand and is not available to purchase from any other manufacturer.

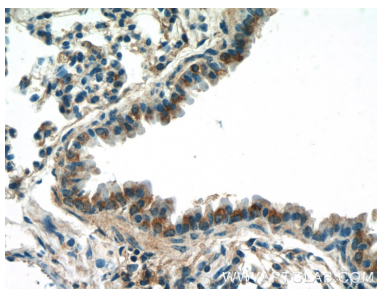
Selected Validation Data



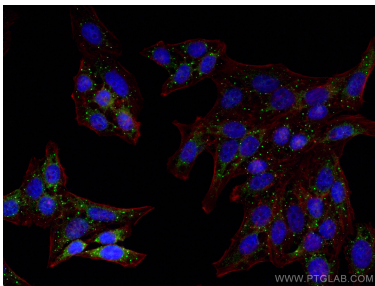
Various lysates were subjected to SDS PAGE followed by western blot with 22373-1-AP (DCP1A antibody) at dilution of 1:5000 incubated at room temperature for 1.5 hours.



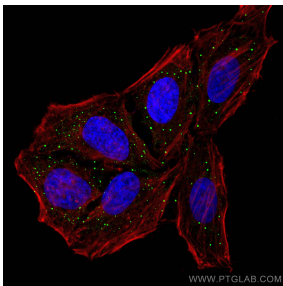
IP result of anti-DCP1A (IP:22373-1-AP, 4ug; Detection:22373-1-AP 1:3000) with mouse brain tissue lysate 3200ug.



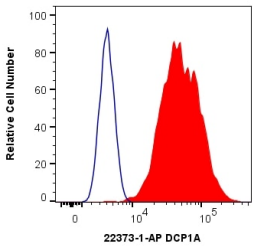
Immunohistochemical analysis of paraffin-embedded mouse lung tissue slide using 22373-1-AP (DCP1A Antibody) at dilution of 1:50 (under 40x lens).



Immunofluorescent analysis of (4% PFA) fixed HepG2 cells using DCP1A antibody (22373-1-AP) at dilution of 1:400 and CoraLite®488-Conjugated Goat Anti-Rabbit IgG(H+L), CL594-Phalloidin (red).



Immunofluorescent analysis of (4% PFA) fixed HepG2 cells using DCP1A antibody (22373-1-AP) at dilution of 1:400 and CoraLite®488-Conjugated Goat Anti-Rabbit IgG(H+L), CL594-Phalloidin (red).



1X10⁶ HeLa cells were intracellularly stained with 0.4 ug Anti-Human DCP1A (22373-1-AP) and CoraLite®488-Conjugated Goat Anti-Rabbit IgG(H+L) at dilution 1:1000 (red), or 0.4 ug Isotype Control. Cells were fixed with 4% PFA and permeabilized with Flow Cytometry Perm Buffer (PF00011-C).