

For Research Use Only

# TTI1 Polyclonal antibody

Catalog Number: 22381-1-AP

1 Publications



## Basic Information

Catalog Number:

22381-1-AP

Size:

150ul, Concentration: 450 ug/ml by Nanodrop and 240 ug/ml by Bradford method using BSA as the standard;

Source:

Rabbit

Isotype:

IgG

Immunogen Catalog Number:

AG17697

GenBank Accession Number:

BC013755

GeneID (NCBI):

9675

UNIPROT ID:

O43156

Full Name:

KIAA0406

Calculated MW:

1089 aa, 122 kDa

Observed MW:

120 kDa

Purification Method:

Antigen Affinity purified

Recommended Dilutions:

WB 1:500-1:2000

IP 0.5-4.0 ug for 1.0-3.0 mg of total protein lysate

## Applications

Tested Applications:

WB, IP, ELISA

Cited Applications:

WB

Species Specificity:

human

Cited Species:

human

Positive Controls:

WB : HeLa cells,

IP : HeLa cells,

## Notable Publications

Author	Pubmed ID	Journal	Application
Honami Yonezawa	35530256	iScience	WB

## Storage

Storage:

Store at -20°C. Stable for one year after shipment.

Storage Buffer:

PBS with 0.02% sodium azide and 50% glycerol pH 7.3.

Aliquoting is unnecessary for -20°C storage

\*\*\* 20ul sizes contain 0.1% BSA

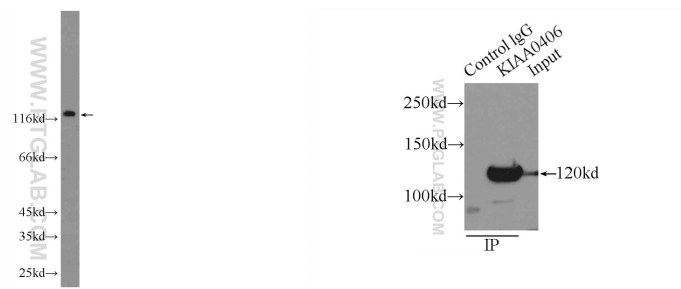
For technical support and original validation data for this product please contact:

T: 1 (888) 4PTGLAB (1-888-478-4522) (toll free in USA), or 1(312) 455-8498 (outside USA)

E: [proteintech@ptglab.com](mailto:proteintech@ptglab.com)  
W: [ptglab.com](http://ptglab.com)

This product is exclusively available under Proteintech Group brand and is not available to purchase from any other manufacturer.

Selected Validation Data



HeLa cells were subjected to SDS PAGE followed by western blot with 22381-1-AP (TTI1 antibody at dilution of 1:1000 incubated at room temperature for 1.5 hours.

IP result of anti-TTI1 (IP:22381-1-AP, 4ug; Detection:22381-1-AP 1:1000) with HeLa cells lysate 1600ug.