

For Research Use Only

# LRI G1 Polyclonal antibody

Catalog Number: 22383-1-AP



## Basic Information

### Catalog Number:

22383-1-AP

### Size:

150ul, Concentration: 600 ug/ml by Nanodrop and 367 ug/ml by Bradford method using BSA as the standard;

### Source:

Rabbit

### Isotype:

IgG

### Immunogen Catalog Number:

AG17880

### GenBank Accession Number:

BC071561

### GeneID (NCBI):

26018

### UNIPROT ID:

Q96JA1

### Full Name:

leucine-rich repeats and immunoglobulin-like domains 1

### Calculated MW:

1093 aa, 119 kDa

### Observed MW:

130 kDa

### Purification Method:

Antigen affinity purification

### Recommended Dilutions:

WB 1:500-1:2000

IHC 1:50-1:500

## Applications

### Tested Applications:

WB, IHC, ELISA

### Species Specificity:

human, mouse

**Note-IHC: suggested antigen retrieval with TE buffer pH 9.0; (\*) Alternatively, antigen retrieval may be performed with citrate buffer pH 6.0**

### Positive Controls:

WB: mouse liver tissue, mouse skin tissue

IHC: mouse kidney tissue,

## Background Information

LRI G1 acts as a feedback negative regulator of signaling by receptor tyrosine kinases, through a mechanism that involves enhancement of receptor ubiquitination and accelerated intracellular degradation.

## Storage

### Storage:

Store at -20°C. Stable for one year after shipment.

### Storage Buffer:

PBS with 0.02% sodium azide and 50% glycerol pH 7.3.

Aliquoting is unnecessary for -20°C storage

\*\*\* 20ul sizes contain 0.1% BSA

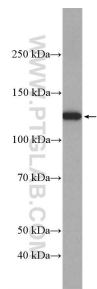
For technical support and original validation data for this product please contact:

T: 1 (888) 4PTGLAB (1-888-478-4522) (toll free in USA), or 1(312) 455-8498 (outside USA)

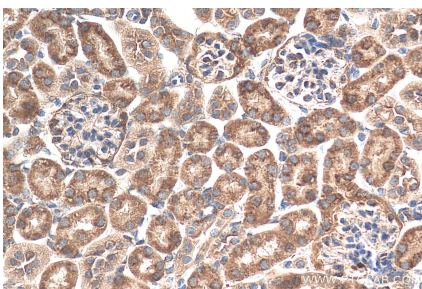
E: [proteintech@ptglab.com](mailto:proteintech@ptglab.com)  
W: [ptglab.com](http://ptglab.com)

This product is exclusively available under Proteintech Group brand and is not available to purchase from any other manufacturer.

## Selected Validation Data



mouse liver tissue were subjected to SDS PAGE followed by western blot with 22383-1-AP (LRIG1 Antibody) at dilution of 1:1000 incubated at 4 degree celsius over night.



Immunohistochemical analysis of paraffin-embedded mouse kidney tissue slide using 22383-1-AP (LRIG1 antibody) at dilution of 1:200 (under 40x lens). Heat mediated antigen retrieval with Tris-EDTA buffer (pH 9.0).