

For Research Use Only

GRIP1 Polyclonal antibody

Catalog Number: 22398-1-AP

3 Publications



Basic Information

Catalog Number:

22398-1-AP

Size:

150ul, Concentration: 700 ug/ml by Nanodrop and 533 ug/ml by Bradford method using BSA as the standard;

Source:

Rabbit

Isotype:

IgG

Immunogen Catalog Number:

AG18071

GenBank Accession Number:

BC115393

GeneID (NCBI):

23426

UNIPROT ID:

Q9Y3R0

Full Name:

glutamate receptor interacting protein 1

Calculated MW:

1128 aa, 122 kDa

Observed MW:

130-135 kDa

Purification Method:

Antigen affinity purification

Recommended Dilutions:

WB 1:500-1:2000

IP 0.5-4.0 ug for 1.0-3.0 mg of total protein lysate

IHC 1:20-1:200

Applications

Tested Applications:

WB, IP, IHC, ELISA

Cited Applications:

WB, IF

Species Specificity:

human, mouse, rat

Cited Species:

mouse

Positive Controls:

WB : mouse brain tissue, mouse testis tissue, rat brain tissue

IP : mouse brain tissue,

IHC : human kidney tissue,

Note-IHC: suggested antigen retrieval with TE buffer pH 9.0; (*) Alternatively, antigen retrieval may be performed with citrate buffer pH 6.0

Notable Publications

Author	Pubmed ID	Journal	Application
Rui Dang	30266599	Neuropharmacology	WB
Akira Kinoshita	34338282	Development	IF
Ping Lu	38142716	J Nutr Biochem	WB

Storage

Storage:

Store at -20°C. Stable for one year after shipment.

Storage Buffer:

PBS with 0.02% sodium azide and 50% glycerol pH 7.3.

Aliquoting is unnecessary for -20°C storage

*** 20ul sizes contain 0.1% BSA

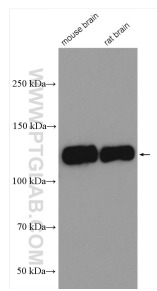
For technical support and original validation data for this product please contact:

T: 1 (888) 4PTGLAB (1-888-478-4522) (toll free in USA), or 1(312) 455-8498 (outside USA)

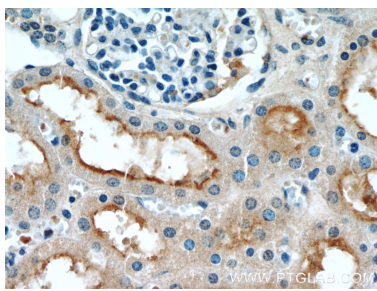
E: proteintech@ptglab.com
W: ptglab.com

This product is exclusively available under Proteintech Group brand and is not available to purchase from any other manufacturer.

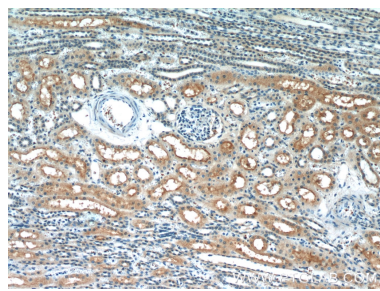
Selected Validation Data



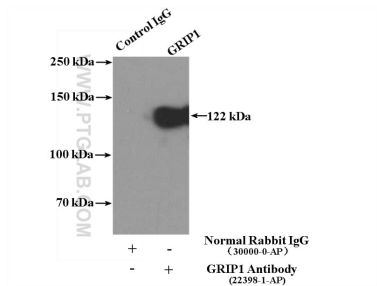
Various lysates were subjected to SDS PAGE followed by western blot with 22398-1-AP (GRIP1 antibody) at dilution of 1:1000 incubated at room temperature for 1.5 hours.



Immunohistochemical analysis of paraffin-embedded human kidney slide using 22398-1-AP (GRIP1 Antibody) at dilution of 1:50.



Immunohistochemical analysis of paraffin-embedded human kidney slide using 22398-1-AP (GRIP1 Antibody) at dilution of 1:50.



IP result of anti-GRIP1 (IP:22398-1-AP, 4ug; Detection:22398-1-AP 1:1000) with mouse brain tissue lysate 5200ug.