

For Research Use Only

# GRIP1 Polyclonal antibody, PBS Only

Catalog Number:22398-1-PBS



## Basic Information

**Catalog Number:**

22398-1-PBS

**Size:**

100ug , Concentration: 1 mg/ml by Nanodrop;

**Source:**

Rabbit

**Isotype:**

IgG

**Immunogen Catalog Number:**

AG18071

**GenBank Accession Number:**

BC115393

**GeneID (NCBI):**

23426

**UNIPROT ID:**

Q9Y3R0

**Full Name:**

glutamate receptor interacting protein 1

**Calculated MW:**

1128 aa, 122 kDa

**Observed MW:**

130-135 kDa

**Purification Method:**

Antigen affinity purification

## Applications

**Tested Applications:**

WB, IHC, IP, Indirect ELISA

**Species Specificity:**

human, mouse, rat

## Storage

**Storage:**

Store at -80°C.

**Storage Buffer:**

PBS only, pH7.3

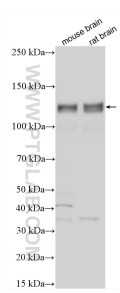
For technical support and original validation data for this product please contact:

T: 1 (888) 4PTGLAB (1-888-478-4522) (toll free in USA), or 1(312) 455-8498 (outside USA)

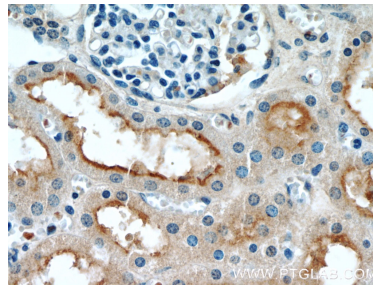
E: [proteintech@ptglab.com](mailto:proteintech@ptglab.com)  
W: [ptglab.com](http://ptglab.com)

This product is exclusively available under Proteintech Group brand and is not available to purchase from any other manufacturer.

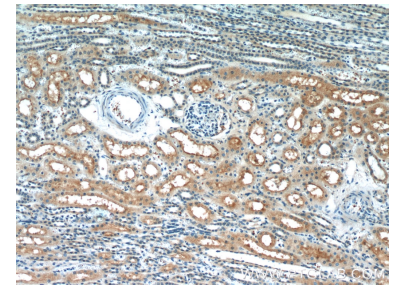
## Selected Validation Data



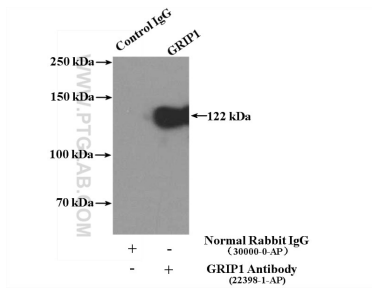
Various lysates were subjected to SDS PAGE followed by western blot with 22398-1-AP (GRIP1 antibody) at dilution of 1:4000 incubated at room temperature for 1.5 hours. This data was developed using the same antibody clone with 22398-1-PBS in a different storage buffer formulation.



Immunohistochemical analysis of paraffin-embedded human kidney slide using 22398-1-AP (GRIP1 Antibody) at dilution of 1:50. This data was developed using the same antibody clone with 22398-1-PBS in a different storage buffer formulation.



Immunohistochemical analysis of paraffin-embedded human kidney slide using 22398-1-AP (GRIP1 Antibody) at dilution of 1:50. This data was developed using the same antibody clone with 22398-1-PBS in a different storage buffer formulation.



IP result of anti-GRIP1 (IP:22398-1-AP, 4ug; Detection:22398-1-AP 1:1000) with mouse brain tissue lysate 5200ug. This data was developed using the same antibody clone with 22398-1-PBS in a different storage buffer formulation.