

## CSNK2B Polyclonal antibody

Catalog Number: 22418-1-AP

2 Publications

## Basic Information

<b>Catalog Number:</b> 22418-1-AP	<b>GenBank Accession Number:</b> BC112017	<b>Purification Method:</b> Antigen affinity purification
<b>Size:</b> 150ul, Concentration: 450 µg/ml by Nanodrop and 320 µg/ml by Bradford method using BSA as the standard;	<b>GeneID (NCBI):</b> 1460	<b>Recommended Dilutions:</b> WB 1:1000-1:6000 IHC 1:50-1:500
<b>Source:</b> Rabbit	<b>Full Name:</b> casein kinase 2, beta polypeptide	
<b>Isotype:</b> IgG	<b>Calculated MW:</b> 215 aa, 25 kDa	
<b>Immunogen Catalog Number:</b> AG18134	<b>Observed MW:</b> 25-30 kDa	

## Applications

<b>Tested Applications:</b> FC, IHC, WB, ELISA	<b>Positive Controls:</b>
<b>Cited Applications:</b> WB	<b>WB :</b> HeLa cells, HepG2 cells, NIH/3T3 cells, K-562 cells, MCF-7 cells
<b>Species Specificity:</b> human, mouse	<b>IHC :</b> human testis tissue, human thyroid tissue, mouse testis tissue, mouse brain tissue
<b>Cited Species:</b> human, mouse	
<b>Note-IHC: suggested antigen retrieval with TE buffer pH 9.0; (*) Alternatively, antigen retrieval may be performed with citrate buffer pH 6.0</b>	

## Background Information

CSNK2B is a ubiquitous protein kinase which regulates metabolic pathways, signal transduction, transcription, translation, and replication. The enzyme is composed of three subunits, alpha, alpha prime and beta, which form a tetrameric holoenzyme. The alpha and alpha prime subunits are catalytic, while the beta subunit serves regulatory functions. The enzyme localizes to the endoplasmic reticulum and the Golgi apparatus. It participates in Wnt signaling, and plays a complex role in regulating the basal catalytic activity of the alpha subunit.

## Notable Publications

Author	Pubmed ID	Journal	Application
Hiroki Okanishi	36357940	Cancer Metab	WB
Yan Zhang	31987502	Biochem Biophys Res Commun	WB

## Storage

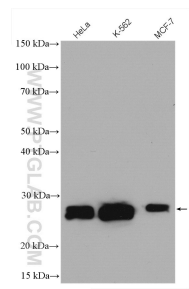
**Storage:**  
Store at -20°C. Stable for one year after shipment.  
**Storage Buffer:**  
PBS with 0.02% sodium azide and 50% glycerol pH 7.3.  
 Aliquoting is unnecessary for -20°C storage

\*\*\* 20ul sizes contain 0.1% BSA

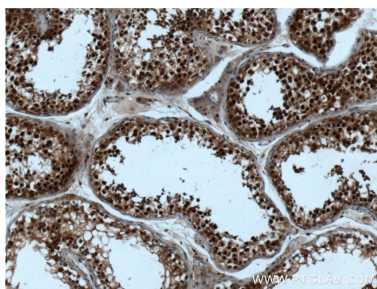
For technical support and original validation data for this product please contact:  
 T: 1 (888) 4PTGLAB (1-888-478-4522) (toll free in USA), or 1(312) 455-8498 (outside USA)  
 E: [proteintech@ptglab.com](mailto:proteintech@ptglab.com)  
 W: [ptglab.com](http://ptglab.com)

This product is exclusively available under Proteintech Group brand and is not available to purchase from any other manufacturer.

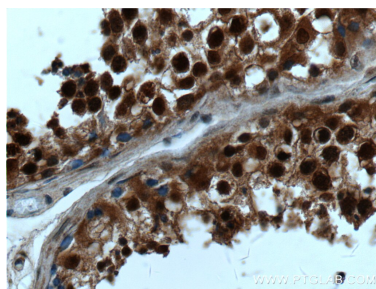
Selected Validation Data



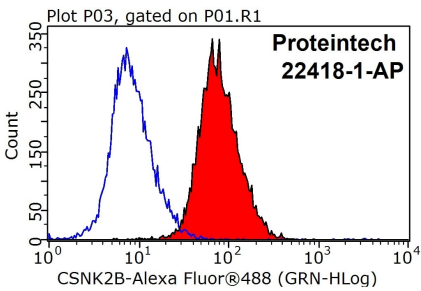
Various lysates were subjected to SDS PAGE followed by western blot with 22418-1-AP (Casein Kinase 2 beta antibody) at dilution of 1:3000 incubated at room temperature for 1.5 hours.



Immunohistochemical analysis of paraffin-embedded human testis tissue slide using 22418-1-AP (Casein Kinase 2 beta antibody at dilution of 1:200 (under 10x lens).



Immunohistochemical analysis of paraffin-embedded human testis tissue slide using 22418-1-AP (Casein Kinase 2 beta antibody at dilution of 1:200 (under 40x lens).



1X10<sup>6</sup> HeLa cells were stained with 0.2ug Casein Kinase 2 beta antibody (22418-1-AP, red) and control antibody (blue). Fixed with 90% MeOH blocked with 3% BSA (30 min). Alexa Fluor 488-conjugated AffiniPure Goat Anti-Rabbit IgG(H+L) with dilution 1:1000.