

For Research Use Only

SIKE1 Polyclonal antibody

Catalog Number: 22432-1-AP



Basic Information

Catalog Number: 22432-1-AP	GenBank Accession Number: BC005934	Purification Method: Antigen affinity purification
Size: 150ul , Concentration: 800 µg/ml by Nanodrop and 393 µg/ml by Bradford method using BSA as the standard;	GeneID (NCBI): 80143	Recommended Dilutions: WB 1:1000-1:4000
Source: Rabbit	Full Name: suppressor of IKK epsilon	
Isotype: IgG	Calculated MW: 207 aa, 24 kDa	
Immunogen Catalog Number: AG18196	Observed MW: 24 kDa	

Applications

Tested Applications: WB, ELISA	Positive Controls: WB : SH-SY5Y cells, HEK-293 cells, MCF-7 cells, mouse brain tissue
Species Specificity: human, mouse	

Background Information

Storage

Storage:
Store at -20°C. Stable for one year after shipment.
Storage Buffer:
PBS with 0.02% sodium azide and 50% glycerol pH 7.3.
Aliquoting is unnecessary for -20°C storage

*** 20ul sizes contain 0.1% BSA

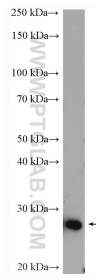
For technical support and original validation data for this product please contact:

T: 1 (888) 4PTGLAB (1-888-478-4522) (toll free in USA), or 1(312) 455-8498 (outside USA)

E: proteintech@ptglab.com
W: ptglab.com

This product is exclusively available under Proteintech Group brand and is not available to purchase from any other manufacturer.

Selected Validation Data



SH-SY5Y cells were subjected to SDS PAGE followed by western blot with 22432-1-AP (SIKE1 antibody) at dilution of 1:2000 incubated at room temperature for 1.5 hours.