

For Research Use Only

# LARG Polyclonal antibody, PBS Only

Catalog Number: 22441-1-PBS

Featured Product



## Basic Information

**Catalog Number:**

22441-1-PBS

**Size:**

100ug, Concentration: 1 mg/ml by Nanodrop;

**Source:**

Rabbit

**Isotype:**

IgG

**Immunogen Catalog Number:**

AG18211

**GenBank Accession Number:**

BC063117

**GeneID (NCBI):**

23365

**UNIPROT ID:**

Q9NZN5

**Full Name:**

Rho guanine nucleotide exchange factor (GEF) 12

**Calculated MW:**

1544 aa, 173 kDa

**Observed MW:**

220 kDa

**Purification Method:**

Antigen affinity purification

## Applications

**Tested Applications:**

WB, IHC, IF/ICC, Indirect ELISA

**Species Specificity:**

human

## Background Information

LARG, also known as ARHGEF12, is one of three regulator of G protein signalling (RGS) domain-containing RhoGEFs. LARG activates the ROCK pathway downstream of Gα12/13 signaling, leading to cytoskeletal reorganisation. LARG performs this activity either as a homodimer or as a heterodimer with Arhgef11. LARG has been implicated in many diseases, including cancer, heart disease, and in HIV viral replication. LARG is phosphorylated and dephosphorylated during mitosis and that Cdk1 is the mitotic kinase responsible for LARG phosphorylation. We got 220 kDa in western blotting, maybe due to its phosphorylation.

## Storage

**Storage:**

Store at -80°C.

**Storage Buffer:**

PBS only, pH7.3

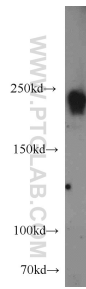
For technical support and original validation data for this product please contact:

T: 1 (888) 4PTGLAB (1-888-478-4522) (toll free in USA), or 1(312) 455-8498 (outside USA)

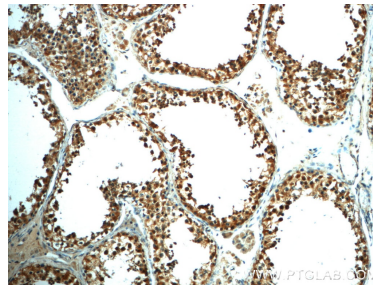
E: [proteintech@ptglab.com](mailto:proteintech@ptglab.com)  
W: [ptglab.com](http://ptglab.com)

This product is exclusively available under Proteintech Group brand and is not available to purchase from any other manufacturer.

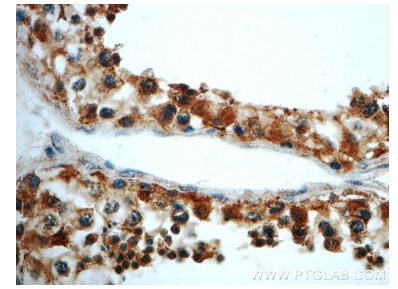
## Selected Validation Data



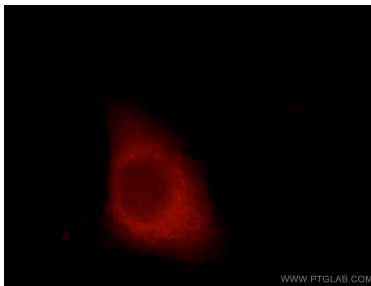
Jurkat cells were subjected to SDS PAGE followed by western blot with 22441-1-AP (LARG antibody) at dilution of 1:2000 incubated at room temperature for 1.5 hours. This data was developed using the same antibody clone with 22441-1-PBS in a different storage buffer formulation.



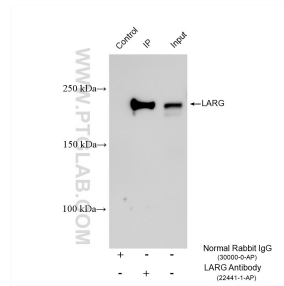
Immunohistochemical analysis of paraffin-embedded human testis slide using 22441-1-AP (LARG Antibody) at dilution of 1:50. This data was developed using the same antibody clone with 22441-1-PBS in a different storage buffer formulation.



Immunohistochemical analysis of paraffin-embedded human testis slide using 22441-1-AP (LARG Antibody) at dilution of 1:50. This data was developed using the same antibody clone with 22441-1-PBS in a different storage buffer formulation.



Immunofluorescent analysis of HepG2 cells, using ARHGEF12 antibody 22441-1-AP at 1:50 dilution and Rhodamine-labeled goat anti-rabbit IgG (red). This data was developed using the same antibody clone with 22441-1-PBS in a different storage buffer formulation.



IP result of anti-LARG (IP:22441-1-AP, 4ug; Detection:22441-1-AP 1:4000) with HEK-293 cells lysate 1320 ug. This data was developed using the same antibody clone with 22441-1-PBS in a different storage buffer formulation.