

For Research Use Only

# CD1e Polyclonal antibody

Catalog Number: 22463-1-AP



## Basic Information

### Catalog Number:

22463-1-AP

### Size:

150ul, Concentration: 150 ug/ml by Nanodrop and 133 ug/ml by Bradford method using BSA as the standard;

### Source:

Rabbit

### Isotype:

IgG

### Immunogen Catalog Number:

AG18008

### GenBank Accession Number:

BC131693

### GeneID (NCBI):

913

### UNIPROT ID:

P15812

### Full Name:

CD1e molecule

### Calculated MW:

388 aa, 44 kDa

### Observed MW:

51 kDa

### Purification Method:

Antigen Affinity purified

### Recommended Dilutions:

WB 1:500-1:1000

## Applications

### Tested Applications:

WB, ELISA

### Species Specificity:

human

### Positive Controls:

WB : Jurkat cells, MOLT-4 cells

## Background Information

CD1e molecule (CD1e, also known as R2 and CD1A) is a member of the CD1 family of transmembrane glycoproteins, which are structurally related to the major histocompatibility complex (MHC) proteins and form heterodimers with beta-2-microglobulin (PMID: 10948205). The discoverers of the CD1 locus originally separated CD1 proteins into group 1 (CD1a, CD1b, and CD1c) and group 2 (CD1d), based on amino acid sequence homology (PMID: 2467814). CD1e is an important modulator of group 1 and group 2 CD1-restricted responses influencing the lipid antigen availability and the generation and persistence of CD1-lipid complexes (PMID: 21844346).

## Storage

### Storage:

Store at -20°C. Stable for one year after shipment.

### Storage Buffer:

PBS with 0.02% sodium azide and 50% glycerol pH 7.3.

Aliquoting is unnecessary for -20°C storage

\*\*\* 20ul sizes contain 0.1% BSA

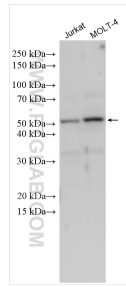
For technical support and original validation data for this product please contact:

T: 1 (888) 4PTGLAB (1-888-478-4522) (toll free in USA), or 1(312) 455-8498 (outside USA)

E: [proteintech@ptglab.com](mailto:proteintech@ptglab.com)  
W: [ptglab.com](http://ptglab.com)

This product is exclusively available under Proteintech Group brand and is not available to purchase from any other manufacturer.

## Selected Validation Data



Various lysates were subjected to SDS PAGE followed by western blot with 22463-1-AP (CD1e antibody) at dilution of 1:600 incubated at room temperature for 1.5 hours.