

For Research Use Only

CD1e Polyclonal antibody, PBS Only

Catalog Number: 22463-1-PBS



Basic Information

Catalog Number:

22463-1-PBS

Size:

100ug, Concentration: 1 mg/ml by Nanodrop;

Source:

Rabbit

Isotype:

IgG

Immunogen Catalog Number:

AG18008

GenBank Accession Number:

BC131693

GeneID (NCBI):

913

UNIPROT ID:

P15812

Full Name:

CD1e molecule

Calculated MW:

388 aa, 44 kDa

Observed MW:

51 kDa

Purification Method:

Antigen Affinity purified

Applications

Tested Applications:

WB, Indirect ELISA

Species Specificity:

human

Background Information

CD1e molecule (CD1e, also known as R2 and CD1A) is a member of the CD1 family of transmembrane glycoproteins, which are structurally related to the major histocompatibility complex (MHC) proteins and form heterodimers with beta-2-microglobulin (PMID: 10948205). The discoverers of the CD1 locus originally separated CD1 proteins into group 1 (CD1a, CD1b, and CD1c) and group 2 (CD1d), based on amino acid sequence homology (PMID: 2467814). CD1e is an important modulator of group 1 and group 2 CD1-restricted responses influencing the lipid antigen availability and the generation and persistence of CD1-lipid complexes (PMID: 21844346).

Storage

Storage:

Store at -80°C.

Storage Buffer:

PBS only, pH7.3

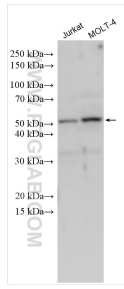
For technical support and original validation data for this product please contact:

T: 1 (888) 4PTGLAB (1-888-478-4522) (toll free in USA), or 1(312) 455-8498 (outside USA)

E: proteintech@ptglab.com
W: ptglab.com

This product is exclusively available under Proteintech Group brand and is not available to purchase from any other manufacturer.

Selected Validation Data



Various lysates were subjected to SDS PAGE followed by western blot with 22463-1-AP (CD1e antibody) at dilution of 1:600 incubated at room temperature for 1.5 hours. This data was developed using the same antibody clone with 22463-1-PBS in a different storage buffer formulation.