

For Research Use Only

SPDYC Polyclonal antibody

Catalog Number: 22471-1-AP



Basic Information

Catalog Number: 22471-1-AP	GenBank Accession Number: BC137244	Purification Method: Antigen Affinity purified
Size: 150ul , Concentration: 400 ug/ml by Nanodrop and 293 ug/ml by Bradford method using BSA as the standard;	GeneID (NCBI): 387778	Recommended Dilutions: IHC 1:250-1:1000
Source: Rabbit	UNIPROT ID: Q5MJ68	
Isotype: IgG	Full Name: speedy homolog C (Xenopus laevis)	
Immunogen Catalog Number: AG18126	Calculated MW: 293 aa, 33 kDa	
	Observed MW: 33-40 kDa	

Applications

Tested Applications: IHC, ELISA	Positive Controls: IHC : human liver tissue, human kidney tissue, human lung cancer tissue
Species Specificity: human	
Note-IHC: suggested antigen retrieval with TE buffer pH 9.0; (*) Alternatively, antigen retrieval may be performed with citrate buffer pH 6.0	

Background Information

SPDYC(Speedy protein C), also known as RINGOC and Ringo2, promotes progression through the cell cycle via binding and activation of CDK1 and CDK2. Downregulation of SPDYC inhibits cell growth, reduces the fraction of cells in G1, and increases the S and G2 populations(PMID: 18802405). SPDYC is involved in the spindle-assembly checkpoint and required for recruitment of MAD2L1, BUBR1 and BUB1 to kinetochores(Uniprot).

Storage

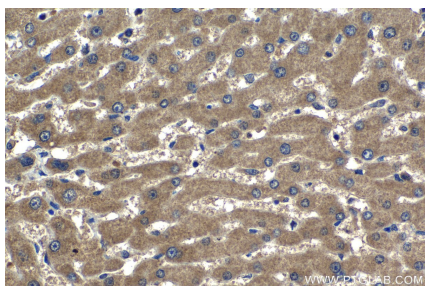
Storage:
Store at -20°C. Stable for one year after shipment.
Storage Buffer:
PBS with 0.02% sodium azide and 50% glycerol pH 7.3.
Aliquoting is unnecessary for -20°C storage

*** 20ul sizes contain 0.1% BSA

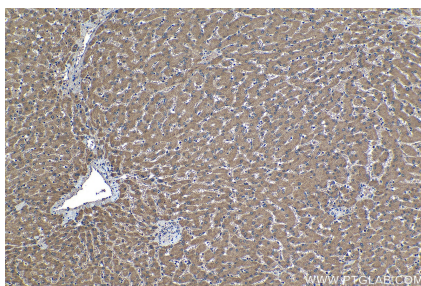
For technical support and original validation data for this product please contact:
T: 1 (888) 4PTGLAB (1-888-478-4522) (toll free in USA), or 1(312) 455-8498 (outside USA)
E: proteintech@ptglab.com
W: ptglab.com

This product is exclusively available under Proteintech Group brand and is not available to purchase from any other manufacturer.

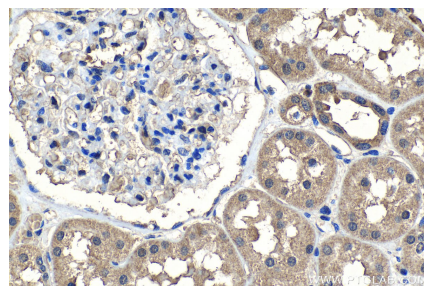
Selected Validation Data



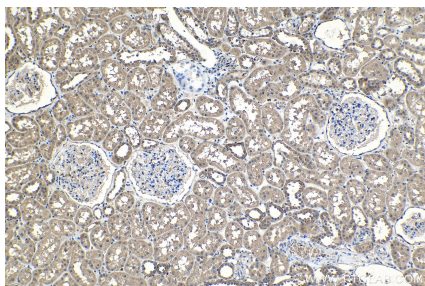
Immunohistochemical analysis of paraffin-embedded human liver tissue slide using 22471-1-AP (SPDYC antibody) at dilution of 1:500 (under 40x lens). Heat mediated antigen retrieval with Tris-EDTA buffer (pH 9.0).



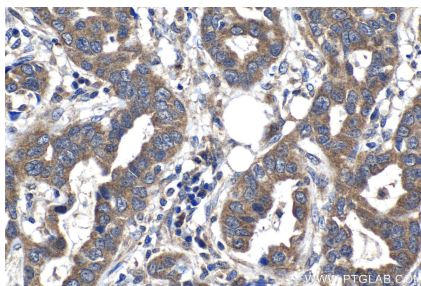
Immunohistochemical analysis of paraffin-embedded human liver tissue slide using 22471-1-AP (SPDYC antibody) at dilution of 1:500 (under 10x lens). Heat mediated antigen retrieval with Tris-EDTA buffer (pH 9.0).



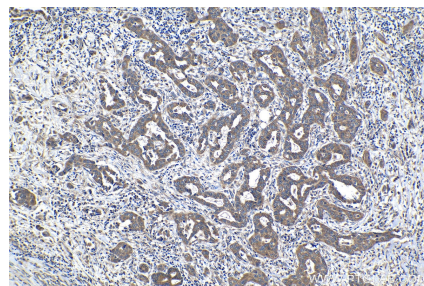
Immunohistochemical analysis of paraffin-embedded human kidney tissue slide using 22471-1-AP (SPDYC antibody) at dilution of 1:500 (under 40x lens). Heat mediated antigen retrieval with Tris-EDTA buffer (pH 9.0).



Immunohistochemical analysis of paraffin-embedded human kidney tissue slide using 22471-1-AP (SPDYC antibody) at dilution of 1:500 (under 10x lens). Heat mediated antigen retrieval with Tris-EDTA buffer (pH 9.0).



Immunohistochemical analysis of paraffin-embedded human lung cancer tissue slide using 22471-1-AP (SPDYC antibody) at dilution of 1:500 (under 40x lens). Heat mediated antigen retrieval with Tris-EDTA buffer (pH 9.0).



Immunohistochemical analysis of paraffin-embedded human lung cancer tissue slide using 22471-1-AP (SPDYC antibody) at dilution of 1:500 (under 10x lens). Heat mediated antigen retrieval with Tris-EDTA buffer (pH 9.0).