

For Research Use Only

CEP290 Polyclonal antibody

Catalog Number: 22490-1-AP

Featured Product

17 Publications



Basic Information

Catalog Number:

22490-1-AP

Size:

150ul, Concentration: 1000 ug/ml by Nanodrop and 513 ug/ml by Bradford method using BSA as the standard;

Source:

Rabbit

Isotype:

IgG

Immunogen Catalog Number:

AG17457

GenBank Accession Number:

BC008641

GeneID (NCBI):

80184

UNIPROT ID:

O15078

Full Name:

centrosomal protein 290kDa

Calculated MW:

2479 aa, 290 kDa

Observed MW:

290 kDa

Purification Method:

Antigen affinity purification

Recommended Dilutions:

WB 1:500-1:1000

IP 0.5-4.0 ug for 1.0-3.0 mg of total protein lysate

IHC 1:500-1:2000

IF/ICC 1:200-1:800

Applications

Tested Applications:

WB, IHC, IF/ICC, IP, ELISA

Cited Applications:

WB, IHC, IF, IP

Species Specificity:

human

Cited Species:

human, mouse

Positive Controls:

WB : HeLa cells,

IP : HeLa cells,

IHC : human prostate cancer tissue,

IF/ICC : MCF-7 cells, HeLa cells

Note-IHC: suggested antigen retrieval with TE buffer pH 9.0; (*) Alternatively, antigen retrieval may be performed with citrate buffer pH 6.0

Background Information

Studies in the Chlamydomonas model system has shown that the ciliary protein CEP290 is a critical component of these Y-link junctions. Additionally, numerous studies have demonstrated that CEP290's function is critical for IFT- in CEP290 knockdown experiments, many proteins that would normally localize to the cilium fail to do so, and cilium formation is disrupted or absent. Mutations in CEP290 are accountable for cases of nephronophthisis, Leber congenital amaurosis and Joubert syndrome. In IF analysis of HeLa cells, the white arrows show centrosome and cilium staining. Two isoforms were produced by alternative splicing with predicted MW of 290 and 180 kDa according to UniProt. Catalog#22490-1-AP can recognise both.

Notable Publications

Author	Pubmed ID	Journal	Application
Stephanie O Agbu	29038301	J Cell Biol	IF
Deniz Conkar	31582766	Sci Rep	WB
Rachel E Turn	34818063	Mol Biol Cell	IHC

Storage

Storage:

Store at -20°C. Stable for one year after shipment.

Storage Buffer:

PBS with 0.02% sodium azide and 50% glycerol, pH7.3

Aliquoting is unnecessary for -20°C storage

*** 20ul sizes contain 0.1% BSA

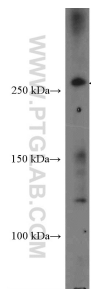
For technical support and original validation data for this product please contact:

T: 1 (888) 4PTGLAB (1-888-478-4522) (toll free in USA), or 1(312) 455-8498 (outside USA)

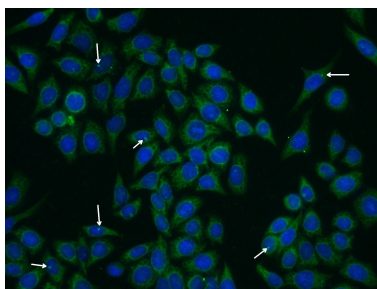
E: proteintech@ptglab.com
W: ptglab.com

This product is exclusively available under Proteintech Group brand and is not available to purchase from any other manufacturer.

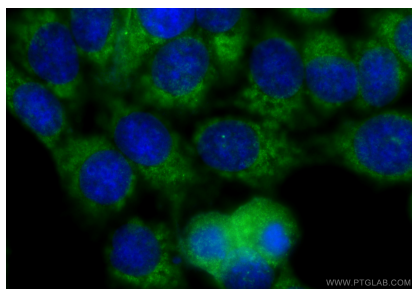
Selected Validation Data



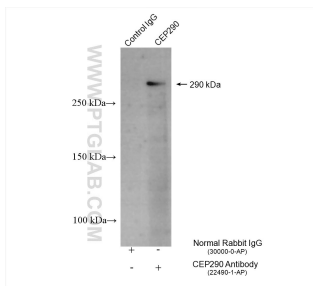
HeLa cells were subjected to SDS PAGE followed by western blot with 22490-1-AP (CEP290 Antibody) at dilution of 1:600 incubated at room temperature for 1.5 hours.



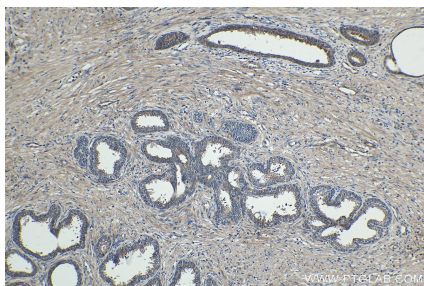
Immunofluorescent analysis of (-20°C Ethanol) fixed HeLa cells using 22490-1-AP (CEP290 antibody) at dilution of 1:50 and Alexa Fluor 488-conjugated AffiniPure Goat Anti-Rabbit IgG(H+L).



Immunofluorescent analysis of (-20°C Methanol) fixed MCF-7 cells using CEP290 antibody (22490-1-AP) at dilution of 1:400 and Multi-rAb CoraLite® Plus 488-Goat Anti-Rabbit Recombinant Secondary Antibody (H+L) (RGAR002).



IP result of anti-CEP290 (IP:22490-1-AP, 4ug; Detection:22490-1-AP 1:3000) with HeLa cells lysate 1320 ug.



Immunohistochemical analysis of paraffin-embedded human prostate cancer tissue slide using 22490-1-AP (CEP290 antibody) at dilution of 1:1000 (under 10x lens). Heat mediated antigen retrieval with Tris-EDTA buffer (pH 9.0).