

For Research Use Only

C5 Polyclonal antibody

Catalog Number: 22492-1-AP



Basic Information

Catalog Number:

22492-1-AP

Size:

150ul, Concentration: 800 ug/ml by Nanodrop;

Source:

Rabbit

Isotype:

IgG

Immunogen Catalog Number:

AG17882

GenBank Accession Number:

BC113740

GeneID (NCBI):

727

UNIPROT ID:

P01031

Full Name:

complement component 5

Calculated MW:

1676 aa, 188 kDa

Observed MW:

120 kDa, 70 kDa

Purification Method:

Antigen Affinity purified

Recommended Dilutions:

WB 1:500-1:2000

Applications

Tested Applications:

WB, ELISA

Species Specificity:

human, mouse, rat

Positive Controls:

WB : human plasma, rat plasma, mouse serum

Background Information

The complement system is an important effector that bridges the innate and adaptive immune systems. The fifth component of complement, C5, is part of the complement cascade and plays an important role in inflammation and cell killing. It consists of disulfide-linked alpha and beta polypeptide chains but can be cleaved into two active peptides (C5a and C5b) by C5 convertases. Mutations and defects in C5 are associated with severe recurrent infections. (PMID: 20010915; PMID: 8011297; PMID: 6554279)

Storage

Storage:

Store at -20°C. Stable for one year after shipment.

Storage Buffer:

PBS with 0.02% sodium azide and 50% glycerol pH 7.3.

Aliquoting is unnecessary for -20°C storage

*** 20ul sizes contain 0.1% BSA

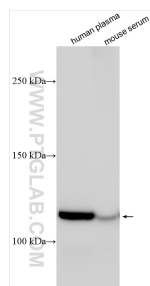
For technical support and original validation data for this product please contact:

T: 1 (888) 4PTGLAB (1-888-478-4522) (toll free in USA), or 1(312) 455-8498 (outside USA)

E: proteintech@ptglab.com
W: ptglab.com

This product is exclusively available under Proteintech Group brand and is not available to purchase from any other manufacturer.

Selected Validation Data



Various lysates were subjected to SDS PAGE followed by western blot with 22492-1-AP (C5 antibody) at dilution of 1:1000 incubated at room temperature for 1.5 hours.