

For Research Use Only

PPP1R3A Polyclonal antibody

Catalog Number: 22495-1-AP



Basic Information

Catalog Number:

22495-1-AP

Size:

150ul, Concentration: 700 µg/ml by Nanodrop;

Source:

Rabbit

Isotype:

IgG

Immunogen Catalog Number:

AG18013

GenBank Accession Number:

BC126453

GeneID (NCBI):

5506

UNIPROT ID:

Q16821

Full Name:

protein phosphatase 1, regulatory (inhibitor) subunit 3A

Calculated MW:

1122 aa, 126 kDa

Observed MW:

110-130 kDa

Purification Method:

Antigen Affinity purified

Recommended Dilutions:

WB 1:5000-1:50000

IF/ICC 1:200-1:800

Applications

Tested Applications:

WB, IF/ICC, ELISA

Species Specificity:

human

Positive Controls:

WB : Jurkat cells, THP-1 cells

IF/ICC : THP-1 cells,

Background Information

PPP1R3A (Protein Phosphatase 1 Regulatory Subunit 3A), also known as Protein Targeting to Glycogen (PTG), is a regulatory subunit of protein phosphatase 1 (PP1), a major serine/threonine phosphatase involved in metabolic regulation. It plays a crucial role in glycogen metabolism by targeting PP1 to glycogen particles, facilitating glycogen synthesis and breakdown. PPP1R3A is involved in muscle glycogen regulation (PMID: 24264575).

Storage

Storage:

Store at -20°C. Stable for one year after shipment.

Storage Buffer:

PBS with 0.02% sodium azide and 50% glycerol pH 7.3.

Aliquoting is unnecessary for -20°C storage

*** 20ul sizes contain 0.1% BSA

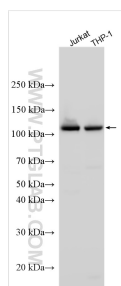
For technical support and original validation data for this product please contact:

T: 1 (888) 4PTGLAB (1-888-478-4522) (toll free in USA), or 1(312) 455-8498 (outside USA)

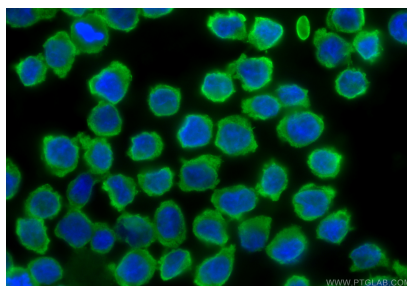
E: proteintech@ptglab.com
W: ptglab.com

This product is exclusively available under Proteintech Group brand and is not available to purchase from any other manufacturer.

Selected Validation Data



Various lysates were subjected to SDS PAGE followed by western blot with 22495-1-AP (PPP1R3A antibody) at dilution of 1:10000 incubated at room temperature for 1.5 hours.



Immunofluorescent analysis of (4% PFA) fixed THP-1 cells using PPP1R3A antibody (22495-1-AP) at dilution of 1:400 and CoraLite® 488-Conjugated Goat Anti-Rabbit IgG(H+L) (SA00013-2).