

For Research Use Only

# LLGL1 Polyclonal antibody, PBS Only

Catalog Number: 22496-1-PBS



## Basic Information

<b>Catalog Number:</b> 22496-1-PBS	<b>GenBank Accession Number:</b> BC151838	<b>Purification Method:</b> Antigen Affinity purified
<b>Size:</b> 100ug, Concentration: 1mg/ml by Nanodrop;	<b>GeneID (NCBI):</b> 3996	
<b>Source:</b> Rabbit	<b>UNIPROT ID:</b> Q15334	
<b>Isotype:</b> IgG	<b>Full Name:</b> lethal giant larvae homolog 1 (Drosophila)	
<b>Immunogen Catalog Number:</b> AG18057	<b>Calculated MW:</b> 1064 aa, 115 kDa	
	<b>Observed MW:</b> 115 kDa	

## Applications

**Tested Applications:**  
WB, IF/ICC, ELISA

**Species Specificity:**  
human

## Background Information

Lethal giant larvae (Lgl) is a scaffolding protein that regulates the establishment of apical-basal polarity in epithelial cells. The human homologs of Lgl are known as LLGL1 and LLGL2. LLGL1 is a tumor suppressor in multiple human cancers, including hepatocellular carcinoma, malignant melanoma, and colorectal cancer (PMID: 34178676; 15735678; 16170365). LLGL2 functions as a promoter of tumor growth and not as a tumor suppressor in ER+ breast cancer (PMID: 30996345).

## Storage

**Storage:**  
Store at -80°C.

**Storage Buffer:**  
PBS Only

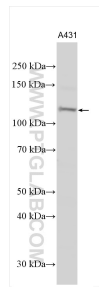
For technical support and original validation data for this product please contact:

T: 1 (888) 4PTGLAB (1-888-478-4522) (toll free in USA), or 1(312) 455-8498 (outside USA)

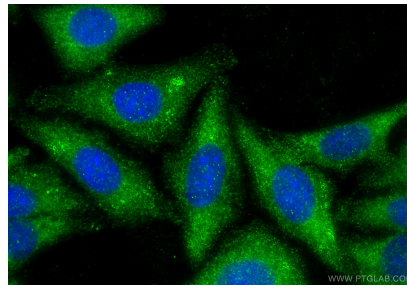
E: [proteintech@ptglab.com](mailto:proteintech@ptglab.com)  
W: [ptglab.com](http://ptglab.com)

**This product is exclusively available under Proteintech Group brand and is not available to purchase from any other manufacturer.**

## Selected Validation Data



A431 cells were subjected to SDS PAGE followed by western blot with 22496-1-AP (LLGL1 antibody) at dilution of 1:800 incubated at room temperature for 1.5 hours. This data was developed using the same antibody clone with 22496-1-PBS in a different storage buffer formulation.



Immunofluorescent analysis of (-20°C Ethanol) fixed HepG2 cells using LLGL1 antibody (22496-1-AP) at dilution of 1:400 and CoraLite® 488-Conjugated Goat Anti-Rabbit IgG(H+L) (SA00013-2). This data was developed using the same antibody clone with 22496-1-PBS in a different storage buffer formulation.