

## EAAT2 Polyclonal antibody

Catalog Number: 22515-1-AP

16 Publications

## Basic Information

<b>Catalog Number:</b> 22515-1-AP	<b>GenBank Accession Number:</b> BC132768	<b>Purification Method:</b> Antigen affinity purification
<b>Size:</b> 150ul , Concentration: 300 µg/ml by Nanodrop;	<b>GeneID (NCBI):</b> 6506	<b>Recommended Dilutions:</b> WB 1:5000-1:50000 IP 0.5-4.0 ug for 1.0-3.0 mg of total protein lysate
<b>Source:</b> Rabbit	<b>Full Name:</b> solute carrier family 1 (glial high affinity glutamate transporter), member 2	
<b>Isotype:</b> IgG	<b>Calculated MW:</b> 574 aa, 62 kDa	
<b>Immunogen Catalog Number:</b> AG18247	<b>Observed MW:</b> 60-70 kDa, 140 kDa	

## Applications

<b>Tested Applications:</b> IP, WB, ELISA	<b>Positive Controls:</b>
<b>Cited Applications:</b> IF, IHC, WB	<b>WB :</b> mouse brain tissue, rat brain tissue
<b>Species Specificity:</b> human, mouse, rat	<b>IP :</b> mouse brain tissue,
<b>Cited Species:</b> human, rat, mouse, pig	

## Background Information

EAAT2 (also known as GLT-1), is encoded by SLC1A2 and is a glutamate transporter which can clear the majority of extracellular glutamate in brain and prevent brain seizures. Three isoforms of EAAT2 exist due to the alternative splicing. In addition to the 65-70 kDa monomer form, 130-150 kDa dimer of EAAT2 can also be observed on SDS-PAGE. (PMID: 22114258)

## Notable Publications

Author	Pubmed ID	Journal	Application
Wenlong Zhang	33093440	Cell Death Dis	WB
Di Qu	36254458	ACS Chem Neurosci	WB, IF
Fanli Kong	36440503	Eur J Neurosci	WB, IF

## Storage

**Storage:**  
Store at -20°C. Stable for one year after shipment.

**Storage Buffer:**  
PBS with 0.02% sodium azide and 50% glycerol pH 7.3.

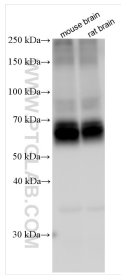
**Aliquoting is unnecessary for -20°C storage**

\*\*\* 20ul sizes contain 0.1% BSA

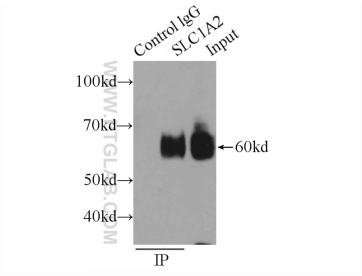
For technical support and original validation data for this product please contact:  
 T: 1 (888) 4PTGLAB (1-888-478-4522) (toll free in USA), or 1(312) 455-8498 (outside USA)  
 E: [proteintech@ptglab.com](mailto:proteintech@ptglab.com)  
 W: [ptglab.com](http://ptglab.com)

This product is exclusively available under Proteintech Group brand and is not available to purchase from any other manufacturer.

Selected Validation Data



Various lysates were subjected to SDS PAGE followed by western blot with 22515-1-AP (EAAT2 antibody) at dilution of 1:10000 incubated at room temperature for 1.5 hours.



IP Result of anti-EAAT2 (IP:22515-1-AP, 3ug; Detection:22515-1-AP 1:1000) with mouse brain tissue lysate 6000ug.