

For Research Use Only

AIRE Polyclonal antibody

Catalog Number: 22517-1-AP

5 Publications



Basic Information

Catalog Number: 22517-1-AP	GenBank Accession Number: BC137270	Purification Method: Antigen Affinity purified
Size: 150ul , Concentration: 500 ug/ml by Nanodrop;	GeneID (NCBI): 326	Recommended Dilutions: WB 1:500-1:2000
Source: Rabbit	UNIPROT ID: O43918	IHC 1:50-1:500
Isotype: IgG	Full Name: autoimmune regulator	IF/ICC 1:50-1:500
Immunogen Catalog Number: AG18249	Calculated MW: 545 aa, 58 kDa	
	Observed MW: 58-69 kDa	

Applications

Tested Applications: WB, IHC, IF/ICC, ELISA	Positive Controls:
Cited Applications: WB, IHC, IF	WB : L02 cells, human plasma tissue, human spleen tissue, mouse thymus tissue, U-937 cells
Species Specificity: human, mouse	IHC : human thymus tissue,
Cited Species: human, mouse	IF/ICC : HeLa cells,
Note-IHC: suggested antigen retrieval with TE buffer pH 9.0; (*) Alternatively, antigen retrieval may be performed with citrate buffer pH 6.0	

Background Information

The function of the protein is not well defined, however it contains zinc finger motifs suggestive of a transcription factor. The protein (isoform 1) is localized to both the nucleus and cytoplasm. Three splice variant mRNAs products have been described [1]. The longer AIRE1 mRNA appears to be more abundant and includes exons 1 through 14. Splice variant AIRE2 includes a portion of the non-coding region of exon 1, an alternatively spliced longer exon 8, plus exons 9 through 14. Variant AIRE3 includes the same exon 1-8-9 sequences as found in AIRE2 but utilizes additional alternative splicing in exon 10 that shifts the reading frame such that a stop codon in exon 12 is utilized. The resulting protein products of these splice variants differ significantly. Defects in this gene cause the autosomal-recessive systemic autoimmune disease termed autoimmune polyendocrinopathy-candidiasis-ectodermal dystrophy (APECED).

Notable Publications

Author	Pubmed ID	Journal	Application
Zhongwei Xin	36115836	Nat Commun	IF
Yoshihiko Tomofuji	32601470	Nat Immunol	WB
H M Du	31238861	Biochemistry (Mosc)	WB

Storage

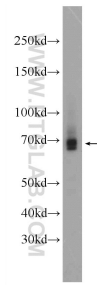
Storage:
Store at -20°C. Stable for one year after shipment.
Storage Buffer:
PBS with 0.02% sodium azide and 50% glycerol pH 7.3.
Aliquoting is unnecessary for -20°C storage

*** 20ul sizes contain 0.1% BSA

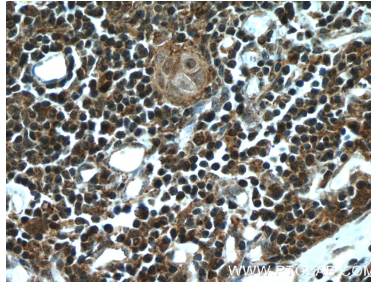
For technical support and original validation data for this product please contact:
T: 1 (888) 4PTGLAB (1-888-478-4522) (toll free in USA), or 1(312) 455-8498 (outside USA)
E: proteintech@ptglab.com
W: ptglab.com

This product is exclusively available under Proteintech Group brand and is not available to purchase from any other manufacturer.

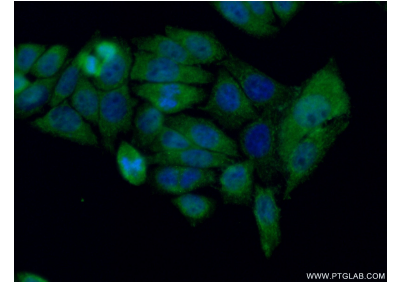
Selected Validation Data



L02 cells were subjected to SDS PAGE followed by western blot with 22517-1-AP (AIRE Antibody) at dilution of 1:1000 incubated at room temperature for 1.5 hours.



Immunohistochemical analysis of paraffin-embedded human thymus tissue slide using 22517-1-AP (AIRE Antibody) at dilution of 1:200 (under 40x lens). Heat mediated antigen retrieval with Tris-EDTA buffer (pH 9.0).



Immunofluorescent analysis of (4% PFA) fixed HeLa cells using 22517-1-AP (AIRE antibody) at dilution of 1:50 and Alexa Fluor 488-conjugated Goat Anti-Rabbit IgG(H+L).