

For Research Use Only

SRGAP2 Polyclonal antibody

Catalog Number: 22519-1-AP

Featured Product

4 Publications



Basic Information

Catalog Number: 22519-1-AP	GenBank Accession Number: BC132874	Purification Method: Antigen Affinity purified
Size: 150ul, Concentration: 750 µg/ml by Nanodrop and 380 µg/ml by Bradford method using BSA as the standard;	GeneID (NCBI): 23380	Recommended Dilutions: WB 1:500-1:2000 IP 0.5-4.0 ug for IP and 1:500-1:2000 for WB IHC 1:20-1:200
Source: Rabbit	Full Name: SLIT-ROBO Rho GTPase activating protein 2	
Isotype: IgG	Calculated MW: 1071 aa, 121 kDa	
Immunogen Catalog Number: AG18278	Observed MW: 121 kDa	

Applications

Tested Applications: IHC, IP, WB, ELISA	Positive Controls: WB: mouse kidney tissue, HEK-293 cells IP: HEK-293 cells, IHC: human kidney tissue,
Cited Applications: IF, IHC, WB	
Species Specificity: human, mouse	
Cited Species: human, mouse	
Note-IHC: suggested antigen retrieval with TE buffer pH 9.0; (*) Alternatively, antigen retrieval may be performed with citrate buffer pH 6.0	

Background Information

Notable Publications

Author	Pubmed ID	Journal	Application
Chen Li	36593959	Theranostics	WB,IHC,IF
Doris Wennagel	36044862	Cell Rep	WB
Abigail U Carbonell	31388001	Nat Commun	WB

Storage

Storage:
Store at -20°C. Stable for one year after shipment.
Storage Buffer:
PBS with 0.02% sodium azide and 50% glycerol pH 7.3.
Aliquoting is unnecessary for -20°C storage

*** 20ul sizes contain 0.1% BSA

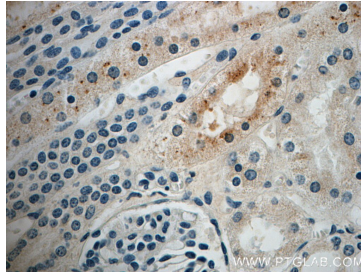
For technical support and original validation data for this product please contact:
T: 1 (888) 4PTGLAB (1-888-478-4522) (toll free in USA), or 1(312) 455-8498 (outside USA)
E: proteintech@ptglab.com
W: ptglab.com

This product is exclusively available under Proteintech Group brand and is not available to purchase from any other manufacturer.

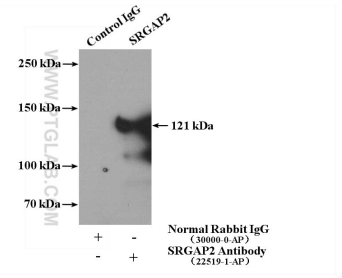
Selected Validation Data



mouse kidney tissue were subjected to SDS PAGE followed by western blot with 22519-1-AP (SRGAP2 antibody) at dilution of 1:1000 incubated at room temperature for 1.5 hours.



Immunohistochemical analysis of paraffin-embedded human kidney slide using 22519-1-AP (SRGAP2 Antibody) at dilution of 1:50.



IP Result of anti-SRGAP2 (IP:22519-1-AP, 4 μ g; Detection:22519-1-AP 1:1000) with HEK-293 cells lysate 3000 μ g.